



USB 3.0 WiFi Hard Drive

Sky Share H10 User Manual



1. Introduction.....	3
2. Spec and System Requirements	5
3. Sky Share H10 Overview	6
4. Sky Share Web UI Overview	8
5. Sky Share App Overview	11
6. Sky Share Wi-Fi Security.....	13
7. Setting up Sky Share Device.....	13
8. Regarding File format.....	16
9. How to play and view your media files	17
10. Downloading Content to Your WiFi Device or Computer.....	23
11. Uploading Content to Sky Share from Your WiFi Device or Computer.....	24
12. Sky Share Setup Page	25
13. How to delete files stored in Sky Share.....	31
14. How to safely disconnect Sky Share from your computer	31
15. Troubleshooting	32

1. Introduction

Sky Share H10, a portable Wi-Fi hard drive available in 500GB and up, breaks the storage limits for all Smart handheld devices such as iPhone, iPad, Android phone, Android tablets, windows mobile phone...etc. and can also support Notebook, PC, and Mac.

More than a traditional portable hard drive's functions, H10 is capable of having up to 8 users to share and stream media content simultaneously with wireless connection.

Its USB 3.0 interface provides up to 5Gbps high speed access in portable hard drive mode. The built-in 2T2R antenna and re-chargeable Lithium battery provides wireless transfer speed up to 300Mbps and up to 5 hours streaming per single charge.

Sky Share H10 also provides iPhone App, iPad App, Andorid App, and Web UI (Web browser User Interface) to support the various WiFi devices mentioned above.

The compact size design makes Sky Share H10 easy to carry and it is also designed for wireless and cableless operation, providing bigger capacity to support your Smartphone and tablet as a wireless portable media library.

The package is including-

USB Wall adapter x 1 pcs

(The adapter type is dependant on the country where unit is purchased.)



(Australia/ New Zealand)



(EU, Iran, Russia...etc)



(Japan, Taiwan, USA...etc)



(UK...etc)

USB to DC Jack x 1pcs



Sky Share x 1 pcs



USB 3.0 cable x 1pcs



Quick Guide including warranty card x 1pcs

2. Spec and System Requirements

Capacity: 500GB, 1TB

Dimension: 133 x 86 x 23.5 mm

Weight: 255g +/- 5%

WiFi Interface: IEEE 802.11b/g/n Standard

Build-in 2T2R Antenna, up to 300 Mbs

Build-in USB 3.0 (Compatible with USB 2.0),
up to 5Gb/s Transfer rate (USB 3.0 Mode)

WiFi connection: up to 8 users

Connection range: up to 100 Feet

Power Supply: DC 5V/2A (Power supplied through AC-to-DC adapter)

Battery: Build-in Lithium Battery for up to 5 hours multimedia streaming (1 device)

Operating Temperature: 5°C ~ 45°C

Storage Temperature: -10°C ~ 70°C

Wireless security: WPA+WPA2

Operation system: Support Win 7, Win XP, Win Vista, Mac OS X (10.5.X+),
iPhone 3GS (iOS 4.2+), iPhone 4, iPhone 4S, iPhone 5, iPod nano, iPad, ipad2, the new
ipad, Anroid 2.3+ smart phones and Tablets

Browsers: Support Safari 5 or later version, Webkit (Android), Internet Explorer 8 or
later version, Firefox, and Google Chrome

File system: FAT32/NTFS

Supporting file types:

You can store any file in Sky Share H10, but need your WiFi device to support the file
format and resolution you want to play or view.

Sky Share iPhone/iPad App: you can play or view the following file types.-

Video: .m4v, mp4, .mov

Photo: JPG, BMP, PNG, GIF

Music: MP3

Document: DOC, XLS, PPT, PDF

For other file types, you can find them in Home Directory and play them if it's
supported by your device application. (For example, .m4a played by Quick Time
Player and .wma played by Windows Media Player)

Sky Share Web UI:

Play any file supported by your device applications and recommended browsers

3. Sky Share H10 Overview



Fig. 1 Sky Share H10 Overview

Power button (1): Once pressing the power button, Sky Share H10 is turned on and will automatically go into WiFi Mode in one minute.

Power button LED (2):

Solid Green: Full battery

Blinking Orange: Half full

Solid Red: Low battery, charging is required

Solid Orange: Charging

Note: It takes about 1.5 hours for the battery without activation and about 4 hours for the battery with activation to charge from low to full status by the wall adapter.

Data/WiFi Access LED (3):

The LED indicates the data access in both of PHDD (portable hard drive) mode and WiFi mode.

WiFi mode (Power on)

Blinking Purple: During setup

Solid Blue: Ready for access

Blinking Blue: WiFi accessing

Solid Red: System error

PHDD mode (Connected to the computer by USB cable)

Fast Blinking Blue: During setup

Solid Blue: Ready for access

Blinking Blue: Data Access

LED off: Hard drive Safety removal

USB 3.0 Micro B (4): Connects Sky Share H10 to your computer and then Sky Share will perform like a portable hard drive (PHDD).

Note: No power charge in this connection. All charging is required to go through DC Jack (5) of Sky Share H10.

DC Jack (5): Connects Sky Share via the USB to DC Jack power cable and its wall charger for charging. You can charge first and then stream the content as a portable media library wirelessly. In addition, you can stream the content while charging.

Reset Pin (6): a). Press the pin lightly and release it immediately. The system will be rebooted. b). Press and hold the pin for about 3 seconds and then release the pin. The system will be reset to factory default setting. During this reset process, all data stored in **Sky Share H10** will be still remaining.

4. Sky Share Web UI Overview

Sky Share Web UI provides users a solution to play and view files stored in Sky Share by accessing the users WiFi device's web browser.

After connecting to Sky Share, open web browser, and type www.skyshare.com or 192.168.49.73 in the URL (uniform resource locator) column and Sky Share Web UI will be displayed. (Referring to the Fig. 2 below)

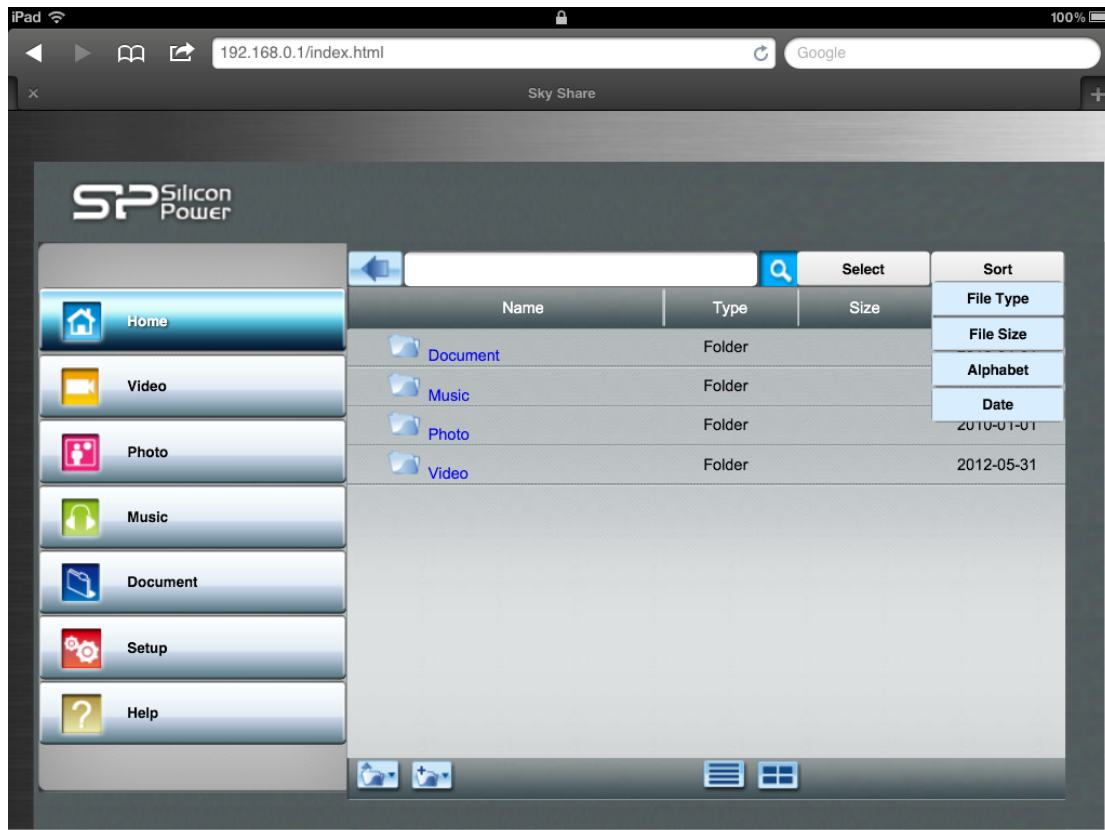


Fig. 2 Sky Share Web UI Overview - 1

Home: Home page of Sky Share Web UI

All stored files can be viewed in the home directory.

Default Media Folders: Video, Photo, Music, Document

Sky Share avoids sorting the whole hard drive during each power-on. This can save user's time during each device power-on when he stores a large number of files in Sky Share. Instead, it is necessary for users to store video, photo, music, and document files in the respective default video, photo, music, and document folder. These four default folders are located under the folder of Sky Share.

Sky Share\


The default folders on the left side of the screen will display the supported video, photo, music, and document files only. If you happen to mix your file types and cannot find them in these four default folders, you can go to "Home" to view a

complete list of all the files that have been stored.

Search: Input keyword in the search column. Sky Share will display all files associated with the keyword.

Sort: The files can be sorted by the file type, file size, creation date, or alphabetically, .


Select/Cancel: Click “select” button to select media files for play, upload, or download. Once clicking cancel, all selection will be deselected.


Folder View:  Display the files in a file list and folder structure

Thumbnail view:  Display the files in thumbnail size

Setup: You can setup Sky Share device from “Setup” page. The detail functions will be described later. (Referring to Section 12 –Sky Share Setup page)

Help: Help page provides some tips for frequently asked questions.

Upload icon:  Click to upload files from your computer to Sky Share

Create Folder icon:  Click to create a new folder other than the default folders.

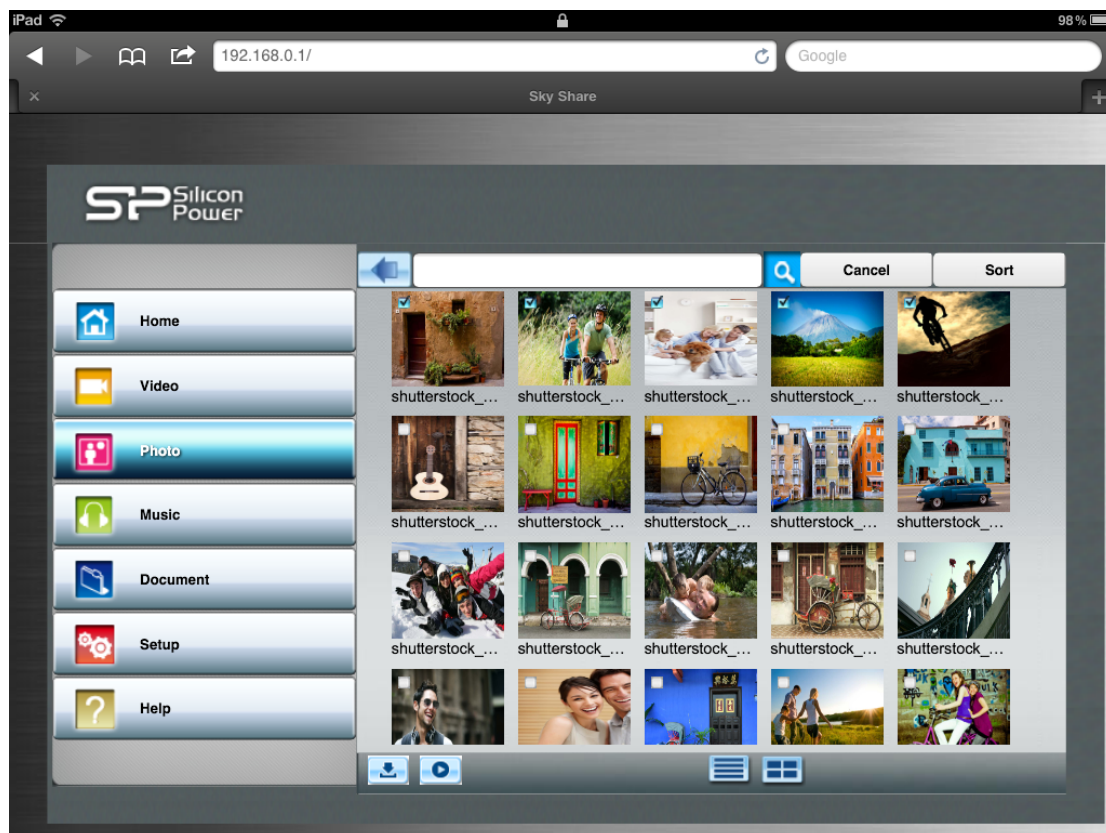




Fig. 3 Sky Share Web UI Overview - 2

Download icon:  You can click to download the selected files from Sky Share to your computer.

Play icon:  After you select one or multiple files, you can click play icon to play the selected media files. .

5. Sky Share App Overview

Sky Share iPhone and iPad apps are available on Apple store for free download. For the download and setup instructions, please refer to the section 7, Sky Share device setup.

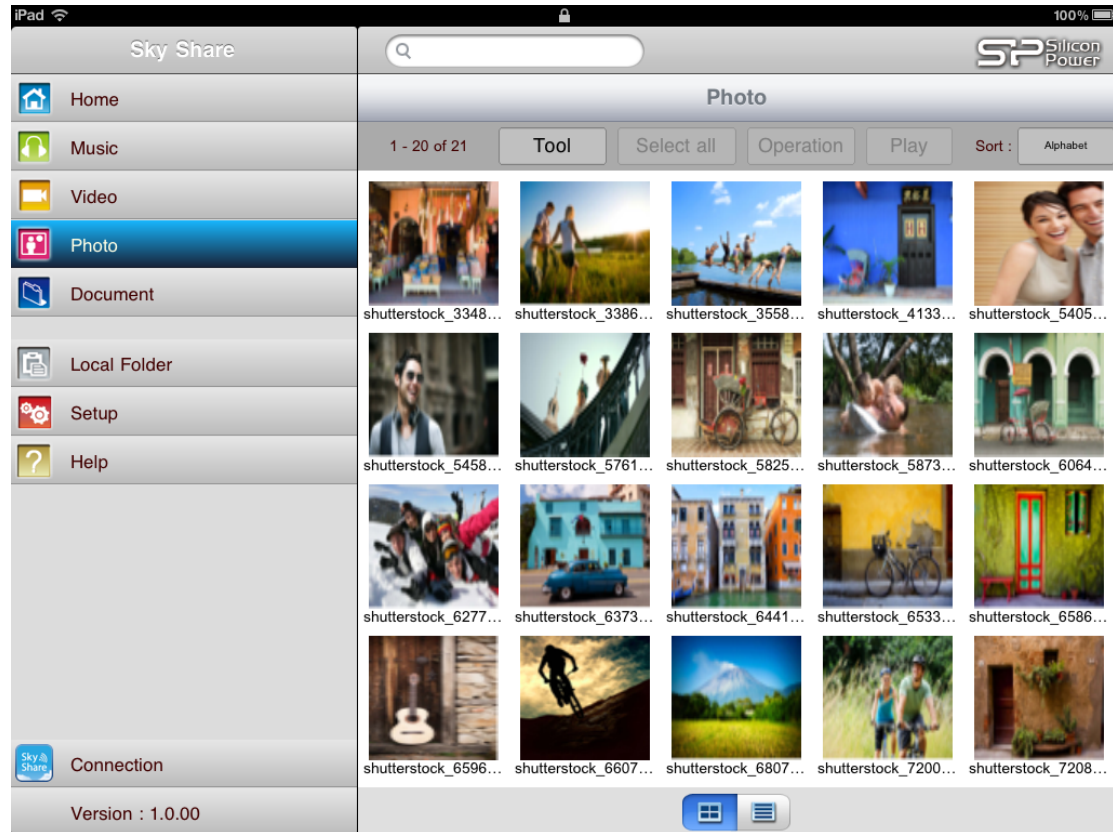


Fig 4. Sky Share App Overview

Home: Home page of Sky Share App

You can view all files stored in Sky Share H10 in home directory.

Default Media Folders: Video, Photo, Music, Document

Sky Share avoids sorting the whole hard drive during each power-on to have a quick setup. Instead, a user is necessary to organize files into the respective folder.

Default folders are located under the folder of Sky Share.

Sky Share\

Video, Photo, Music, and Document folder on the left side of the screen will display the supported video, photo, music, and document files only. If you mix your file types and cannot find them in these four folders, you can go to “Home” to view a complete listing of stored files.

Search: Same as Web UI function

Sort: Same as Web UI function

Tool/Cancel: Tap “Tool” button to select media files for play, upload to Sky Share, or download to iPhone/iPad local folder. Tap “Cancel” button to cancel the selection function.

Select all: Tap “Select all” and then all files will be selected.

Deselect all: Tap “Deselect all”, all selections will be cleared.

Operation: After selecting the files, you can tap “operation” to have a further operation.

1). For the files stored in Sky Share, you can tap “operation” to select:

“download to local folder”: allow you to download your selected files to local folder from Sky Share.

“Attach to email”: allow you to attach one file to email.

“Delete”: allow you to delete the selected files.

In case of photo, you can have one more function below:

“download to photo album”: allow you to download your selected files to the photo album of iPhone or iPad.

2). For the files stored in local folder, you can tap “operation” to select:

“Upload to Sky Share”: allow you to upload your selected files to Sky Share.

“Attach to email”: allow you to attach one file to email

“Delete”: allow you to delete the selected files.

In case of photo, you can have one more function below:

“Upload from photo album”: tap local folder and then tap “upload from photo album”. Camera roll of iPhone or iPad will pop up. Once you tap the photo, the photo will be uploaded to Sky Share automatically.

Folder View: View the files presented in a file list and folder structure from your computer.

Thumbnail view: View the files presented in thumbnail size.

Setup: Same as Web UI function

Help: Help page provides some tips for frequently asked questions.

Play: After you select one or multiple files, you can tap “play” icon to play the media files selected by you.

6. Sky Share Wi-Fi Security

Sky Share H10 is a wireless broadcasting device with a range up to 30 Meters/100 Feet.

Note: The signal range is related to the environment where you use Sky Share. When you are using Sky Share, be aware that your files are visible to any device connected to your Sky Share. You can set a password to restrict access to Sky Share. (Refer to section 12, Sky Share setup page), you may limit access to your files stored in Sky Share based on your privacy settings.

7. Setting up Sky Share Device

This setting up procedure is also provided in User Quick Guide.

If you have already completed the installation process, you may skip this section.

Step 1:



Fig. 5 Connect Sky Share to your computer by USB 3.0 cable

Plug in USB 3.0 cable into USB port (compatible with USB 2.0 device) to your computer to have faster data transfer in Portable Hard drive mode (PHDD Mode).

Step 2:



Fig. 6 Copy files to Sky Share from your computer in PHDD mode

In PHDD mode, you can find video/photo/music/document sub-folders under Sky Share directory. Copy your video, photo, music, document files into the respective default folders.

Note: You can copy any file to the Sky Share, but the device you use to connect Sky Share will only play or view the file formats it supports.

There are some software applications to convert video files into different formats. You may want to convert the files into the formats compatible with your device before copying them to Sky Share.

Step 3:

Remove USB cable, and press on the power button on the Sky Share.

Once you power on Sky Share, the system will automatically go into WiFi mode.

After pressing the power button, the data/WiFi access LED will blink in purple for about 1 min. Once the status is ready for use, this LED will turn blue.

During the product shipment, the build-in battery of Sky Share is partially charged to enable Sky Share access.

When the power button turns red, please charge your Sky Share with the included USB to DC cable and USB Wall adapter.

In order to use the battery efficiently, it's recommended to activate the battery. For battery activation, you will need to charge the battery from low to full for 3 to 5 cycles. After battery activation, you can have a longer battery hour, but will need to take longer hours (up to 4 hours) to charge the battery from low to full status.

Step 4:



Fig. 7 Connect your WiFi device to Sky Share

For iPhone/iPad

1. Install Sky Share app (search for “Sky Share” on the app store and install it free of charge.) Keyword: Sky Share
2. On the iPhone/iPad, Select Settings > Wi-Fi and then select Sky Share from the wireless network list.
3. Tap the Sky Share app to open the application from iPhone/iPad home screen.

For Android Smartphone/Tablet:

1. Install the Sky Share app (you can search “Sky Share” on the Android Market and install free of charge).
2. On the Android Smartphone/Tablet, Select settings and then enable WiFi
3. Select and connect Sky Share from the wireless network list
4. Tap the Sky Share app to open the application from Android smartphone/tablet home screen

For Other Tablets, Smartphones and Computers

1. Enable WiFi
2. Select and connect Sky Share from your device’s wireless network list.
3. Launch your device’s Web browser and type 192.168.49.73 or www.skyshare.com on URL column. The Web UI (user interface) will pop up for your use.

Safari of iPhone/iPad and Web kit of Android smartphone/tablet are also supported if Sky Share app is not installed.

8. Regarding File format

The Sky Share hard drive is formatted to FAT32 format, a Windows standard. FAT32 file system can only support the file size up to 4GB. If you want to play the file bigger than 4GB, you can format Sky Share into NTFS file system, remove USB cable, power-on Sky Share, and then the default folders will be automatically created. Both of NTFS and FAT32 are supported by Sky Share. But, Mac OS will only be able to read NTFS files. In order to write NTFS files in Mac OS, a 3rd party NTFS driver will be required.

Warning: Do not allow Time Machine® to use Sky Share for backup. Time Machine will attempt to reformat the hard drive inside Sky Share.

9. How to play and view your media files

Sky Share Web UI is available for any wireless-enabled tablet, computer, or smartphone with recommended web browsers. You can play and view your media files by Sky Share Web UI.

In addition, Sky Share app for iPhone and iPad is available for free download now. Section 7 has described how to link to Sky Share Web UI and how to download and launch Sky Share app. This section further provides instructions for playing videos, music and viewing photos and documents by using the Sky Share app and the Web UI.

Playing Videos

1. Connect to Sky Share
2. Open the Sky Share app or a Web UI.
3. Select the Video tab on the left side of the screen
4. Tap the video you want to watch and then the video will play.

Browser only: Some browsers download the entire video before the video can be played. The download time is subject to the actual file size.

If a video you copied to the Sky Share device cannot be played, it may be related to the file format not supported by your media player.

To pause a video:

For the app: Tap the screen and then tap the pause icon.

For a browser: Tap the pause button in your media player.

To stop playback of a video:

For the app: Tap the screen and then select the **Done** button in the upper left corner.

For a browser: Close the media player.

Playing Music

1. Connect to Sky Share
2. Open the Sky Share app or a Web UI.
3. Select the Music tab on the left side of the screen
4. Tap the music file you want to listen to and then the music will start.

If a music file you copied to the Sky Share device cannot be played, it may be related to the file format not supported by your media player.

For the app, after you select the music files, these files will be listed in the play list. (Refer to the figure 8). You can tap to repeat the selected music file or repeat all selected music files in the playlist and then tap to play, pause, or stop. If you would like to remove the music files from the play list, you can select “delete” to remove

selected music file or select “empty” to remove all music files from the play list.

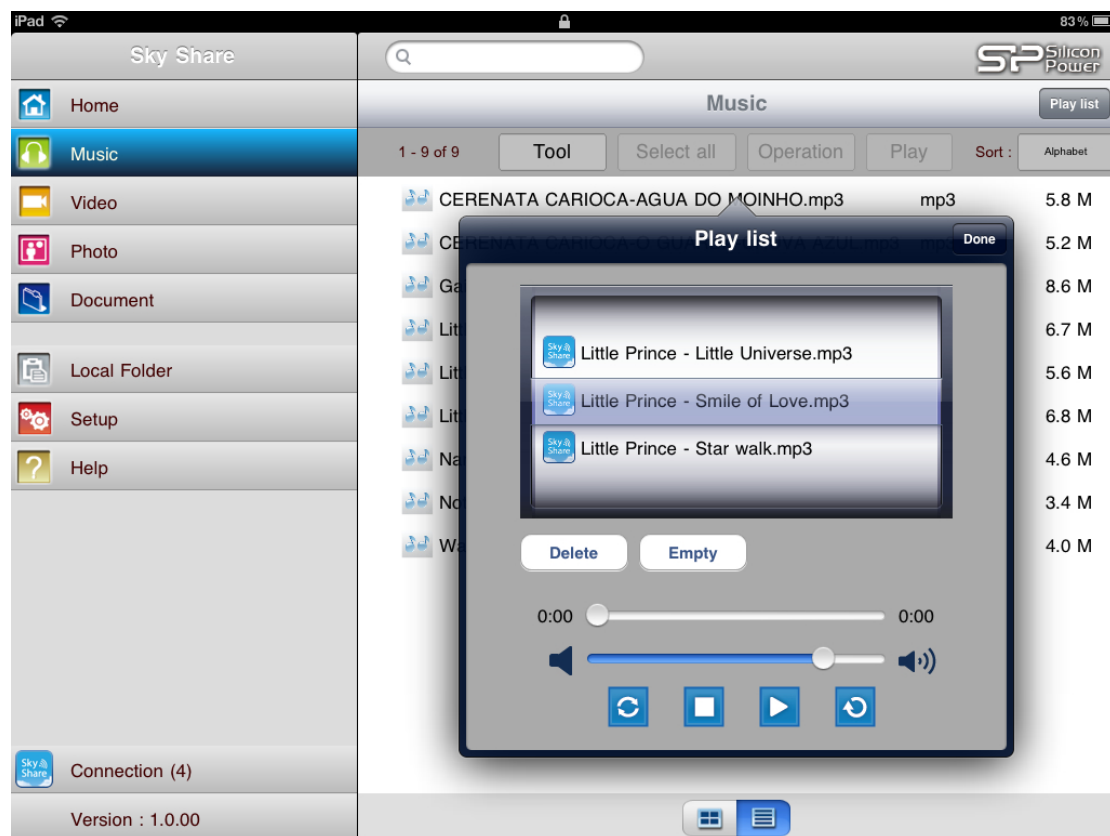


Fig. 8: Music play list



: Tap this icon to repeat selected music file play



: Tap this icon to repeat all selected music files play in playlist



: Tap this icon to play the music file / Tap again to pause the file



: Tap this icon to stop the file

To pause music:

For the app: Tap the screen and then tap the pause icon.

For a browser: Tap the pause button in your media player.

To stop playback of music:

For the app: Tap the screen and then tap the stop button of the playlist.

For a browser: Close the media player.

Viewing Photos

1. Connect to Sky Share
2. Open the Sky Share app or a Web UI.
3. Select the Photo tab on the left side of the screen
4. Tap the Photo you want to view and then the photo will be displayed.

If a photo file you've copied to the Sky Share device cannot be displayed, it may be related to the file format not being supported by your media player.

5. You can also tap "Select" button on the top of the screen.

Once the "select" button is tapped, the check box will be displayed. You can select one or multiple photo files you want to play and then tap the "Play" button to view photo slide show.

For the app only, during the photo slide show, you can tap the screen and then tap the slide show button displayed in upper right corner to select the different transition effects of the slide show and also decide the interval time in-between each slide. (Refer to Figure 9)

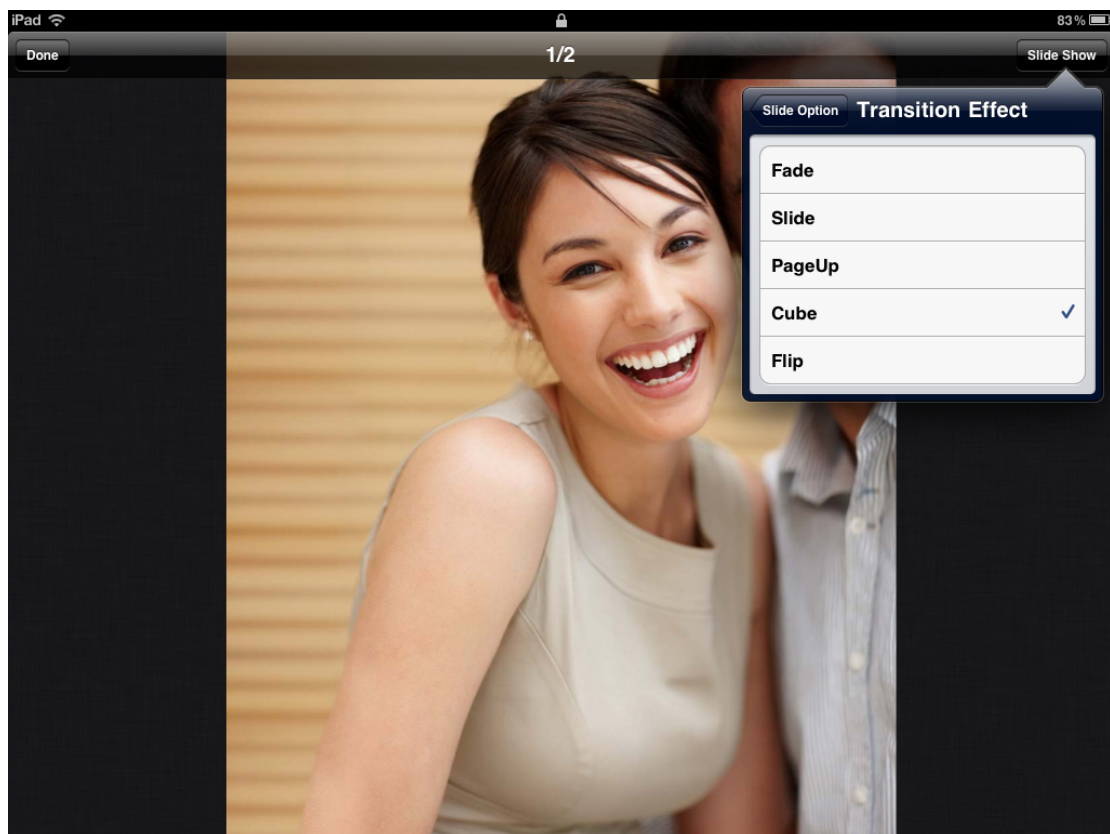


Fig. 9 Transition Effect of Photo Slide Show

To stop playback of a photo slide show:

For the app: Tap the screen and then tap the **Done** button in the upper left corner.

For a browser: Close the current picture or tap the back arrow

Viewing Documents

1. Connect to Sky Share
2. Open the Sky Share app or a Web UI.
3. Select the Document tab on the left side of the screen
4. Tap the Document you want to view and then the document will open.

If a document file you copied to the Sky Share device cannot be opened, it may be related to the file format is not supported by the device you use to connect to Sky Share. Please check your device’s specification for its supported document types.

Viewing Content

Sky Share provides both “Folder view” and “Thumbnail” view in App and Web UI for Photos.

Folder View: Lists your files in folder structure.

Thumbnail View: Lists your files and folders in thumbnail pictures

You can switch “Folder view” or “Thumbnail view”. Please refer to the screen below:

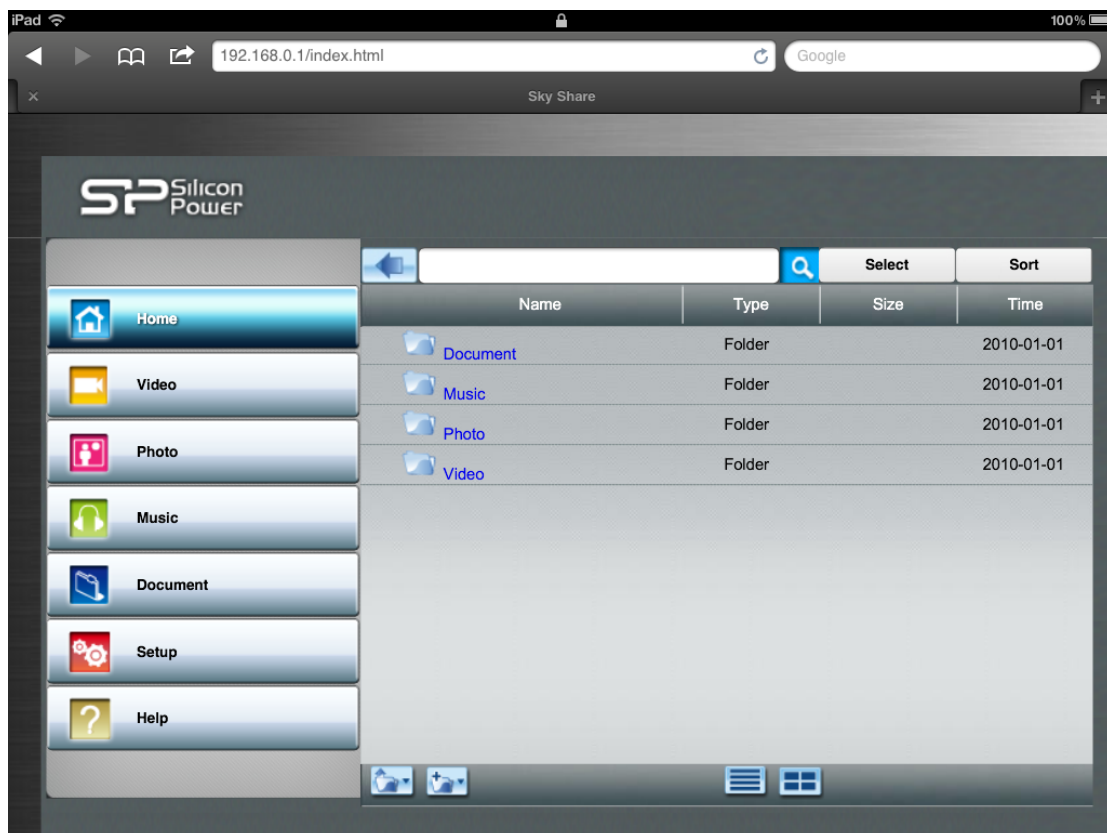


Fig.10 Folder view of Web UI

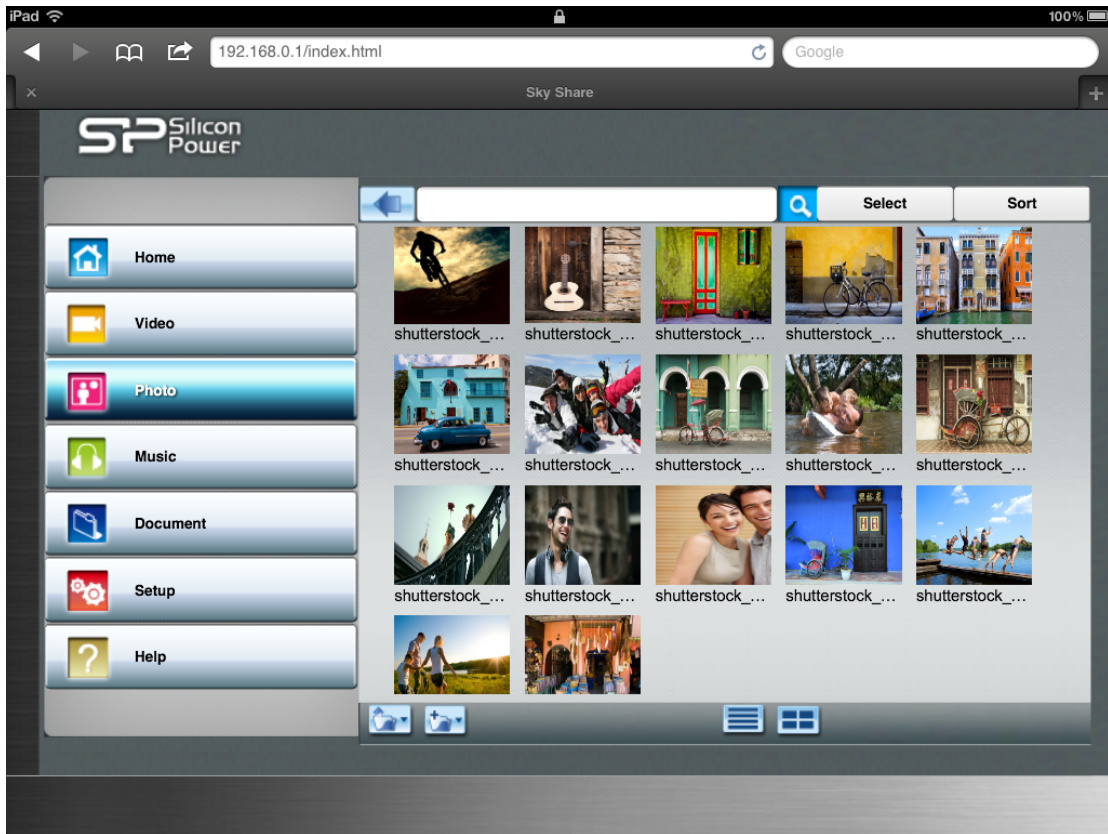


Fig.11 Thumbnail view of Web UI

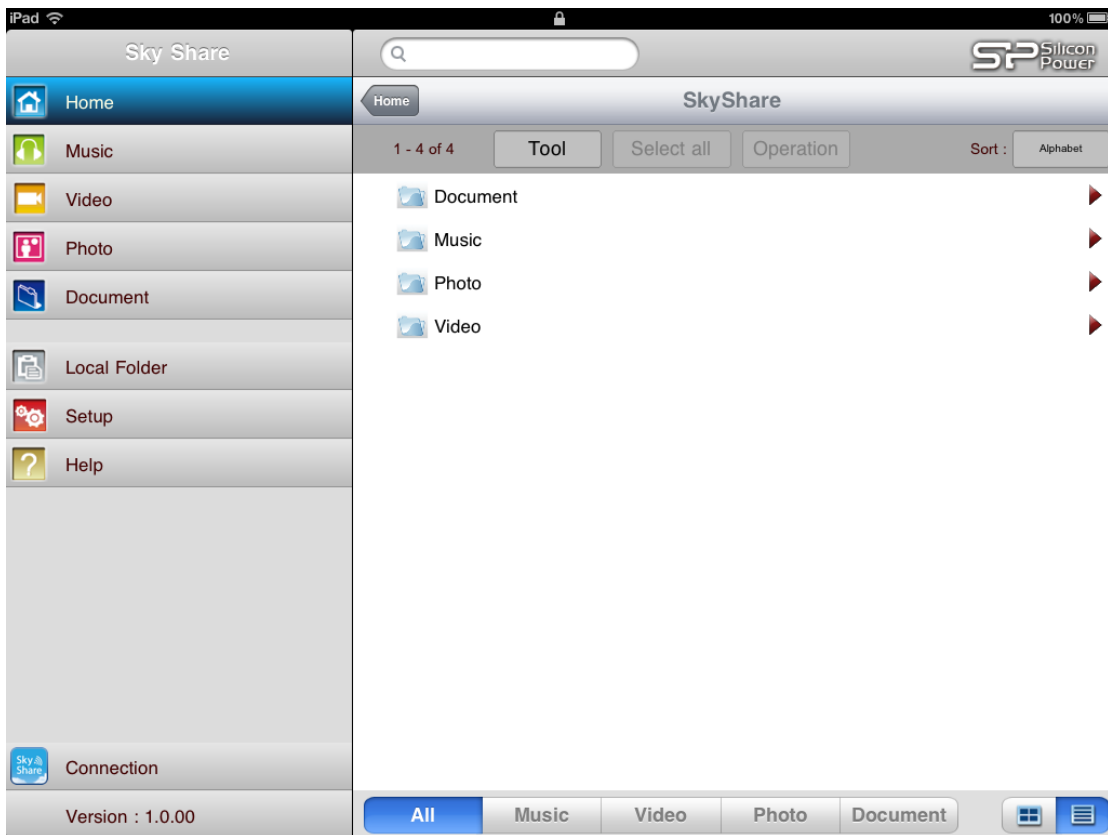


Fig.12 Folder view of App

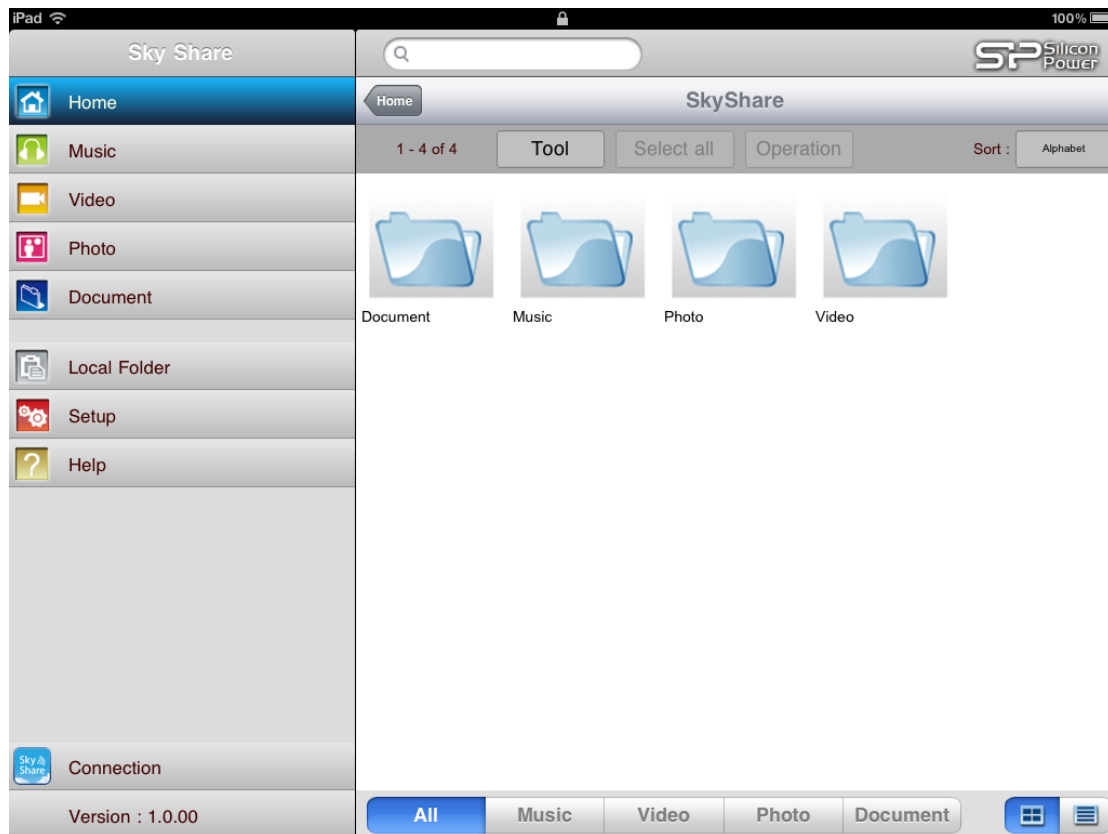


Fig.13 Thumbnail view of App

The App further provides the file categorization function in folder view and thumbnail view of Home. You can select “All”, “Music”, “Video”, “Photo”, or “Document” listed on the bottom of the browsing area to filter the file types displayed in current directory. (Referring to Fig. 13)

Note: This function is to filter the files only stored in the current directory you have selected.

Sort:

Sky Share provides a file sorting function for a user to easily find their files. When there are many files listed in the browsing area, you can tap “Sort” and then select how you would like to view your files. You can sort by file type, file size, date, or alphabet.

File type: When you select it, the system will sort the files based on the file type.

File size: When you select it, the system will sort the files based on file size from the biggest file size to the smallest file size.

Alphabet: When you select it, the system will sort the files based on the name of the files from A to Z.

Date: When you select it, the system will sort the files based on its creation date

from latest date to the oldest date.

Search file

If you store a huge number of files in Sky Share and want to find the specific file to view or play, you can input the keyword in the search column and then tap search. The system will find all files related to your input keyword and list them in the browsing area.

10. Downloading Content to Your WiFi

Device or Computer

In addition to streaming your content from the Sky Share device, you can download files from Sky Share to your media device or computer.

For a Browser, you can download your files from Sky Share to your WiFi device or computer. After you select the files you want to download, please tap the download icon.

Note: For some WiFi devices, this download function of Web UI may be inactive. (For example: iPhone and iPad.)

For the App, you can download the files you selected from Sky Share to the “Local folder” of your iPhone or iPad. After you select the files you want to download, please select “operation” and then select “download to local folder”.

11. Uploading Content to Sky Share from Your WiFi Device or Computer

In addition to streaming your content from the Sky Share device, you can upload files from your media device or computer to Sky Share.

For a Browser, you can upload your files from your WiFi device or computer to Sky Share. Once you select the upload icon, a window will pop up for you to select the files source and then the files will be saved into the current folder of Sky Share.

Note: For some WiFi devices, this Upload function of Web UI may be inactive. (For example: iPhone and iPad.)

For the App, you can upload the photos from your Photo album of iPhone and iPad to Sky Share. Please tap “local folder” and then select “Upload to Sky Share”. The camera roll of iPhone or iPad will pop up. Once you select the photo, it will be automatically uploaded to Sky Share.

Note: it’s limited to one photo upload each time.

In addition, you can upload the files stored in local folder of your iPhone/iPad to Sky Share. After you tap “tool” and then select the files you want to upload, please tap “operation” and then select “upload to Sky Share”. For this function, multiple files can be selected.

Create Folder

In addition to the default folders, you may want to create your own folders to store files. You can do by the following ways:

a.) Create the folder by PHDD mode (portable Hard drive)

It’s the same operation as traditional portable hard drive.

b.) Create the folder via Web UI

Once you tap “Create Folder” icon, a window will pop up for you to input the folder name. Enter the name and then tap “OK” button, this new folder will be created in the current folder.

Note: Sky Share supports only one layer of subfolder. Please limit the folder creation under this rule.

Note: This function is not supported by iPhone and iPad app.

12. Sky Share Setup Page

Sky Share comes with default setting. You may want to adjust the setting to your own preferences. For example, setting your password, change the name of Sky Share, upgrade its firmware and more. The setting adjustment can be done through the setup page of Sky Share Web UI or App.

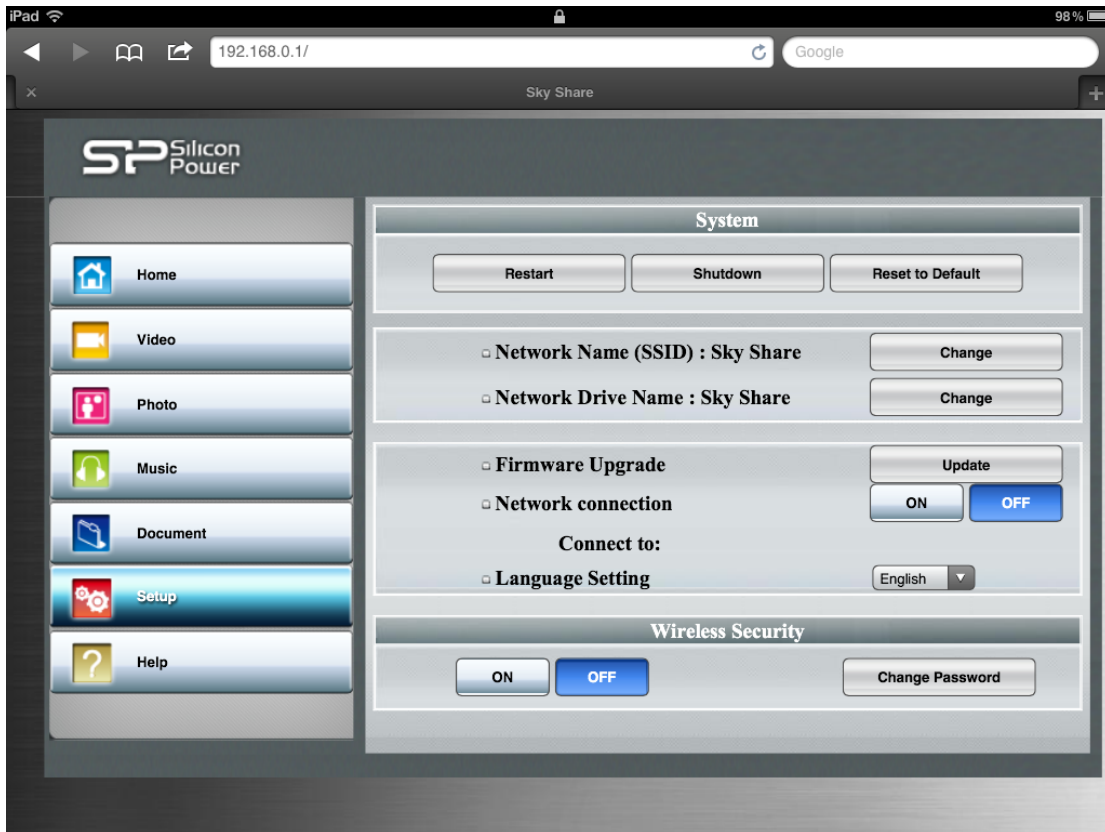


Fig.14 Setup page of Web UI

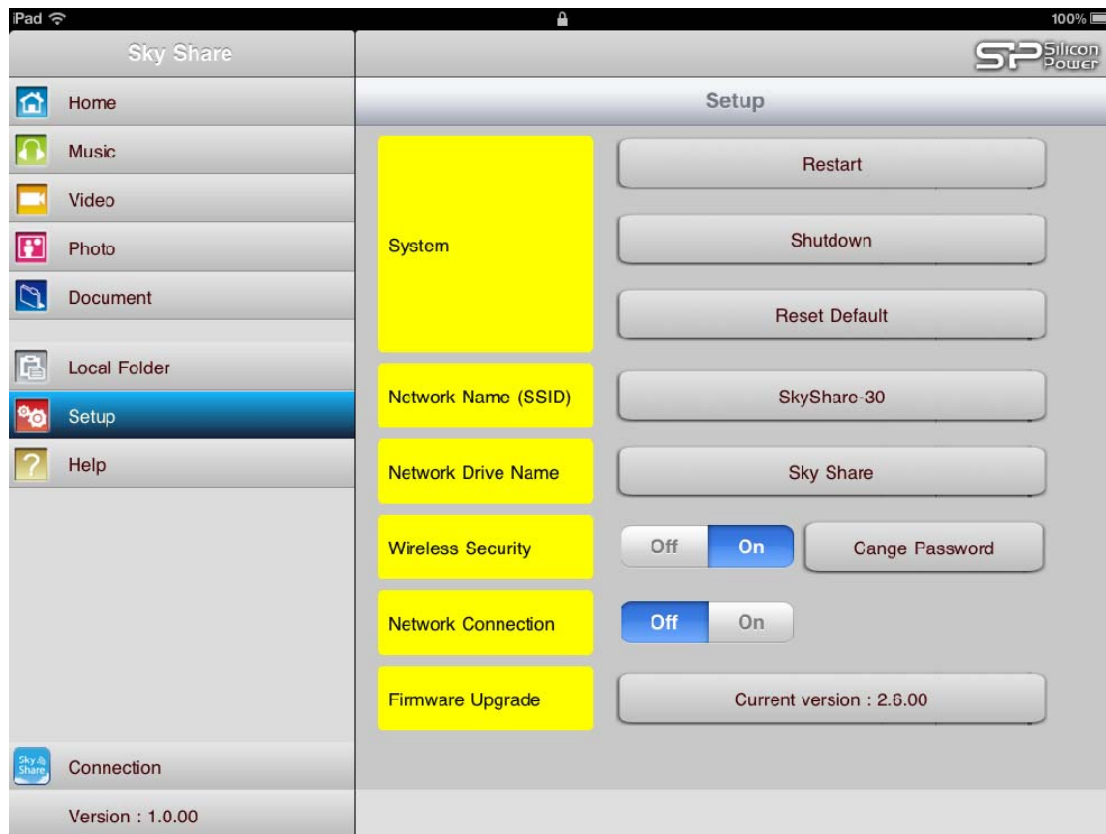


Fig.15 Setup page of App

Restart

If you encounter a minor problem with Sky Share, you can consider to restart Sky Share.

When you tap Restart, Sky Share will take a moment to restart the system. Once the system is ready (Refer to section 3, Sky Share H10 Overview - LED indication), please re-connect to Sky Share and open Sky Share Web UI or App for a further operation. During the restart process, the setting of Sky Share and all files stored in Sky Share will remain.

You can also reset the device by pressing the hardware reset pin lightly and releasing it immediately.

Please make sure no one is watching a video, viewing photos, listening to music, or working with any other file stored in Sky Share before you restart.

Shutdown

To turn off Sky Share, you can press the power button or tap the Shutdown from setup page of Sky Share Web UI or App. Please make sure no one is watching a video, viewing photos, listening to music, or working with any other file stored in Sky Share before you shutdown Sky Share.

Reset Default

If you want to recover Sky Share setting to its factory default setting, you can tap Reset Default from the setup page of Sky Share Web UI or App. You can have the same function if you press the hardware reset pin for 3 seconds and then release it. When you tap Reset Default, Sky Share will take a moment to reset the system. Once the system is ready (Referring to section 3, Sky Share H10 Overview - LED indication), please re-connect to Sky Share and open Sky Share Web UI or App for a further operation.

For this function, all files stored in Sky Share will remain, but the setting of Sky Share will return back to the original factory default setting. You may want to use it if you forget the password or encounter some problem you cannot solve by restart. Please make sure no one is watching a video, viewing photos, listening to music, or working with any other file stored in Sky Share before you enable Reset Default.

Change Network Name (SSID)

The Sky Share H10 is named “Sky Share” by default. This is the network name shown in the available network list during your wireless connection. It’s also known as the SSID (Service Set Identifier). You can change it to your preferred name by following these steps:

1. Switch to the setup page of Sky Share Web UI or App and then click “Change” button of Network Name.
2. Type a new name and then tap OK
3. Sky Share will take a moment to change the network name in its system.
4. Please reconnect to your Sky Share device after the name has been changed.

Change Network Drive Name

Network Drive (Samba Share) function is available for Windows PC/NB environment. The default setting of Network drive name is Sky Share. If a user has a preferred name, it can be changed.

Please switch to the Setup page of Sky Share Web UI or App.

Click “Change” button of Network Drive Name.

Type the new name in pop-up window and then click “OK”.

Sky Share will take a while to change the name in its system. Please wait for a while.

Please reconnect to your Sky Share device after the name has been changed.

Firmware Upgrade

If new firmware is available to enhance the Sky Share functions, it will be available on our website. http://www.silicon-power.com/support/su_dlc.php

Once you download the firmware, please store it in the root directory of Sky Share H10 in PHDD mode. After that, please remove USB 3.0 cable and follow the following steps to update the Sky Share H10 firmware.

1. Please make sure no other user is using Sky Share H10.
2. Please plug adapter to have a stable power.
3. Press power button to turn on Sky Share H10.
4. After the system is ready, please connect to Sky Share H10.
5. Switch to setup page of Sky Share H10 Web UI or App
6. Tap "Update" button of firmware Upgrade
7. The system will re-confirm if you do want to execute firmware upgrade. Please tap OK.
8. Please wait while Sky Share H10 takes a moment to upgrade the firmware.
9. Once the firmware upgrade is completed, the LED of WiFi/Data access will change to solid blue from blinking blue

Note: It's important to plug adapter to have a stable power while upgrading firmware. In case of sudden power loss, the firmware may be damaged.

Network Connection

The Sky Share device is a wireless network on its own. When your WiFi device is connected to Sky Share, WiFi connection is dedicated for Sky Share wireless. If you want to use your WiFi device to surf on the Internet or check e-mail while connected to Sky Share, you can switch on "Network Connection" function from the setup menu to re-connect to your usual network.

1. Network Connection ON

Switch to the "setup page" of Web UI or App.

Press "ON" of Network Connection. Your WiFi enabled device will start to search the available network list nearby. Tap the network you want to connect. In the case there is a "Password" required, please enter the correct password and then press the "confirm" button. A message will pop up to show that the selected network is connecting. Please wait a moment. Once it's ready, you will need to reconnect Sky Share again. Please switch to "Setup page" for confirmation. (refer to figure 16)

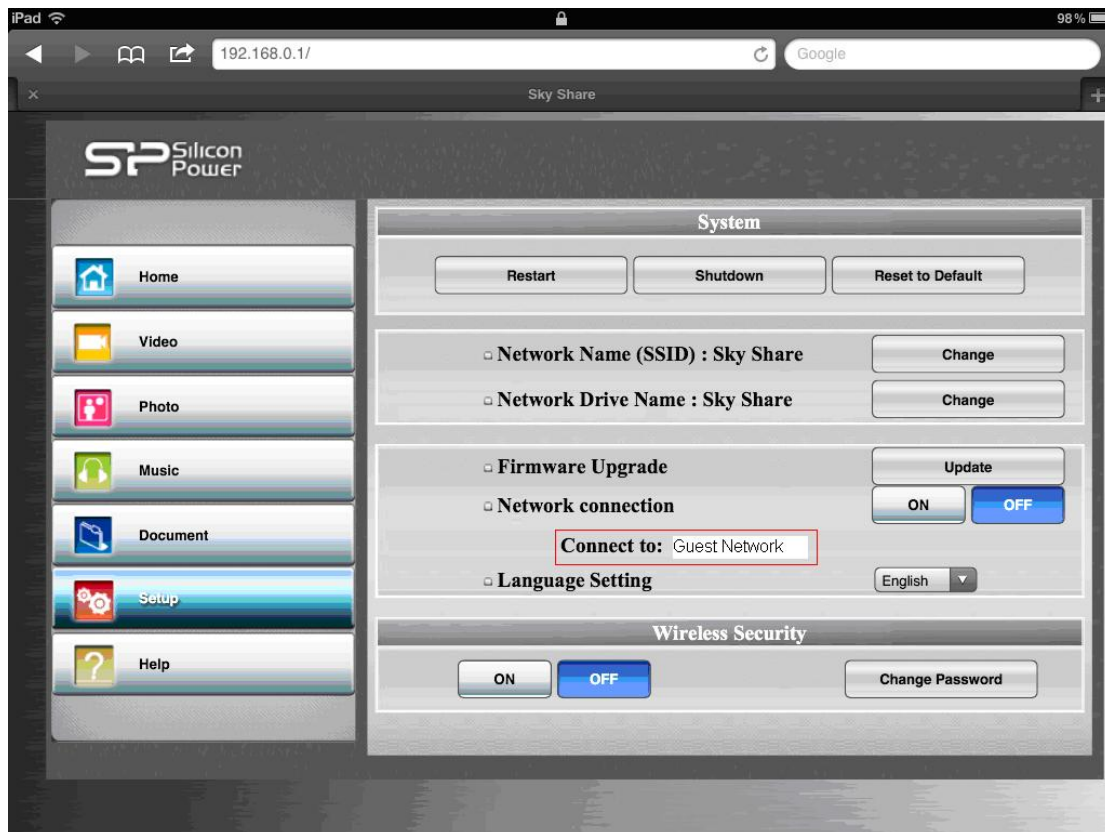


Fig. 16 Network connection confirmation

2. Network Connection Off

If you would like to turn off Network connection, please go to “setup page” of Web UI or App and then press “OFF” of Network connection.

Sky Share will disable this function and restart again. After the restart is ready, please reconnect to Sky Share.

Wireless Security

Sky Share provides you with a password function to protect your network access. The default setting, the password function is off. If you want to restrict access to your Sky Share device, you may want to set a password. Especially, when you are in an environment where you don't want any unauthorized user to access your Sky Share.

1. Please switch to Setup page of Sky Share Web UI or App.
2. Tap ON of Wireless Security. A window will pop-up for a user to input wireless password.
3. Once input is done, please tap OK. Sky Share will take a while to setup the password. Please wait for a while.
4. Once it's ready, please reconnect to Sky Share with your password.

To turn off the password function, switch to the setup page of Sky Share Web UI or App.

Tap OFF of Wireless Security.

The system will re-confirm if you do want to disable the password.

Once you tap “Yes”, Sky Share will take a while to switch off Password. Please wait a moment. Once it’s ready, please reconnect to Sky Share.

To change the password

Please switch to the setup page of Sky Share Web UI or App.

Tap “Change” of Wireless Security.

A window will pop-up for a user to input wireless password.

Once you click “OK”, Sky Share will take a while to change the password. Please wait a moment.

Once it’s ready, please reconnect to Sky Share with your new password.

The password must be at least eight characters long and no more than 32 characters. Only numbers and alphabet are valid for a password choice.

Sky Share User Access Management

The Sky Share is designed to allow up to 8 different devices to connect at once to Sky Share. (Recommend to limit up to three users for HD Video streaming). If a 9th user is trying to connect, they will be blocked. To allow a blocked device to access Sky Share, one connected user must first disconnect from Sky Share’s wireless network. Either switch off its WiFi function or select any other wireless network other than Sky Share.

13. How to delete files stored in Sky Share

You can delete files in PHDD mode. Once you plug the USB 3.0 cable to your computer, the Sky Share will function as a normal portable hard drive. You can read, write, and erase files in Sky Share as you would in a standard portable hard drive. In addition, Sky Share app also provides a “delete file” function. Refer to the figure 17.

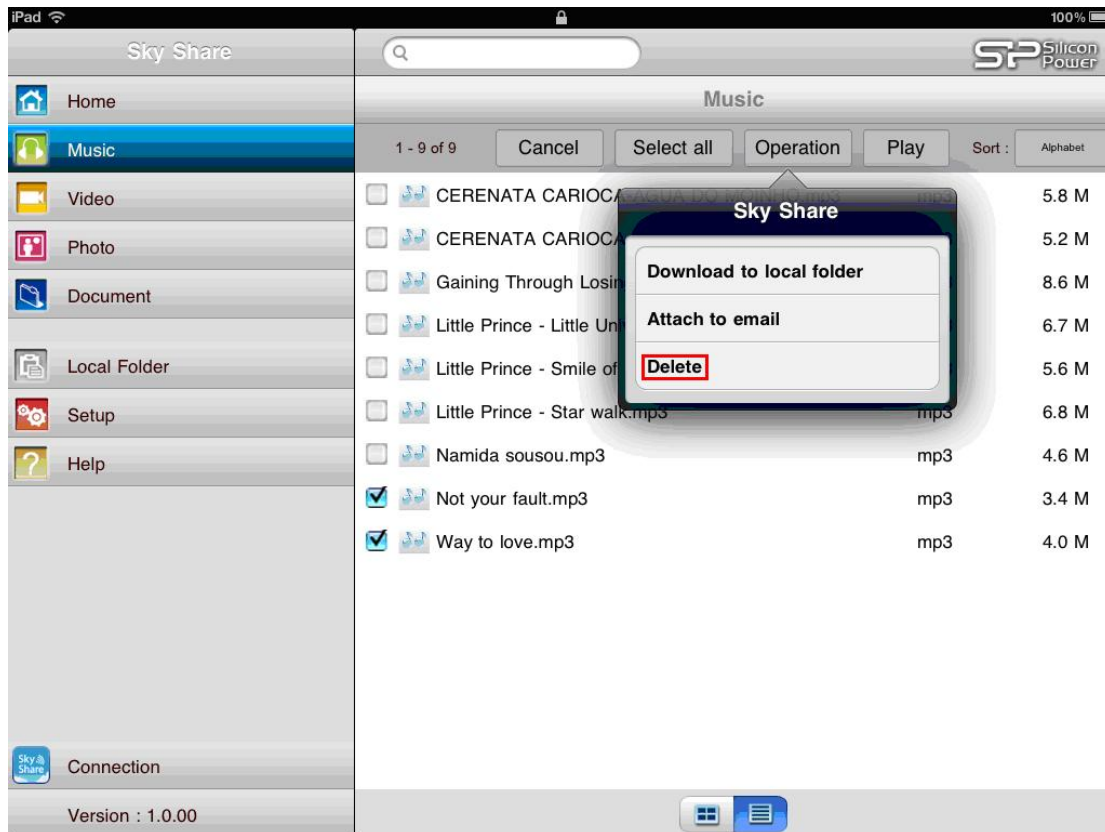


Fig.17 Deleting files (App)

14. How to safely disconnect Sky Share from your computer

It's highly recommended to safely remove Sky Share in order to avoid missing data or file damage.

1. Make sure that no files in Sky Share are still in use or transfer.
2. To safely eject the Sky Share from your computer:
 - For Mac OS, drag the Sky Share drive icon from the desktop to the trash.
 - For Windows, click the Safely Remove Hardware icon.
3. Wait for the data access LED off and then remove Sky Share from your computer.

15. Troubleshooting

- **Can I change default IP address (192.168.49.73)?**

No, the default static IP address cannot be changed.

- **I cannot use the Internet after I connect to Sky Share. What happened?**

The Sky Share device is a wireless network on its own. When your WiFi device is connected to Sky Share, WiFi connection is dedicated to Sky Share wireless. If you want to use your WiFi device to surf on the Internet or check e-mail while connecting Sky Share, you can switch on “Network Connection” function from the setup menu to re-connect to your usual network.

- **I cannot play some of my songs, videos, and files.**

Please make sure the device you use to connect Sky Share can support your file formats.

You can copy any file to the Sky Share, but the device you use to connect Sky Share will only play or view the file formats it supports.

There are some software applications to convert video files into different formats. You may want to convert the files into the formats compatible with your device before copying them to Sky Share.

- **I reformatted Sky Share for my Mac by mistake.**

If you reformatted Sky Share by mistake, please return Sky Share back to FAT32 format. After power on under FAT32 format, the system will re-build the default folders and initial status.

- **I cannot play the file bigger than 4GB.**

The default format of Sky Share H10 is FAT32. FAT32 file system can only support the file size up to 4GB. If you want to play the file bigger than 4GB, you can format Sky Share into NTFS file system, remove USB cable, power-on Sky Share, and then the default folders will be automatically created. Both of NTFS and FAT32 are supported by Sky Share. But, Mac OS will only be able to read NTFS files. In order to write NTFS files in Mac OS, a 3rd party NTFS driver will be required.

Federal Communication Commission Interference Statement

This device complies with Part 15 of the FCC Rules. Operation is subject to the following two conditions: (1) This device may not cause harmful interference, and (2) this device must accept any interference received, including interference that may cause undesired operation.

This equipment has been tested and found to comply with the limits for a Class B digital device, pursuant to Part 15 of the FCC Rules. These limits are designed to provide reasonable protection against harmful interference in a residential installation. This equipment generates, uses and can radiate radio frequency energy and, if not installed and used in accordance with the instructions, may cause harmful interference to radio communications. However, there is no guarantee that interference will not occur in a particular installation. If this equipment does cause harmful interference to radio or television reception, which can be determined by turning the equipment off and on, the user is encouraged to try to correct the interference by one of the following measures:

- Reorient or relocate the receiving antenna.
- Increase the separation between the equipment and receiver.
- Connect the equipment into an outlet on a circuit different from that to which the receiver is connected.
- Consult the dealer or an experienced radio/TV technician for help.

FCC Caution: Any changes or modifications not expressly approved by the party responsible for compliance could void the user's authority to operate this equipment.

This transmitter must not be co-located or operating in conjunction with any other antenna or transmitter.

Radiation Exposure Statement:

The product comply with the FCC portable RF exposure limit set forth for an uncontrolled environment and are safe for intended operation as described in this manual. The further RF exposure reduction can be achieved if the product can be kept as far as possible from the user body or set the device to lower output power if such function is available.

Safety Guidelines

Please read the safety guidelines below carefully before using the Sky Share Product. Incorrect use of your device may cause undesired operation, reduced battery performance, or damage of your device.

1. Do not drop the product. Dropping may cause product damage.
2. Extreme shock and vibration may cause damage to the product such as data corruption etc.....
3. Do not attempt to open or disassemble this product.
4. Store and operate between 5~45°C
5. Recharge the battery every 3 months when not in use.
6. Do not place this product near a heat source or flame or in a high temperature environment.
7. Do not allow this product to have contact with liquid(s).
8. When scrapping this product, the battery needs to be disposed of properly.