

SP HDD Lock Utility

User Manual



Table of Contents

- 1. Disclaimer 3
- 2. Product Introduction..... 3
- 3. System Requirements..... 3
- 4. Getting Started 4
 - 4.1 Installing SP HDD Lock Utility..... 4
 - 4.2 Enable password protection 8
 - 4.3 Unlock HDD after enable password protection..... 9
 - 4.4 Change password 10
 - 4.5 Disable password protection 11
- 5. About SP HDD Lock Utility 13

1. Disclaimer

This user manual is provided by Silicon Power Computer & Communications Inc. for information and service purpose. The copyright of all the contents, including and not limited of text, graphics, images and etc., are owned by Silicon Power and others. Silicon Power reserves all the legal right to the use of the content. Unauthorized use and replication of information and content is regarded as copyright infringement.

Disclaimer:

The software and service are provided based on “current situation” and “the state of service being provided”, and not guarantee in any sort both implicitly and explicitly. For any direct, indirect and accidental harm due to the use of our service and software, in spite of being acknowledged by Silicon Power, Silicon Power will not be held responsibility in any way. The use of our software and service is completely based on user’s own discretion.

Silicon Power reserves the right to modify the content of user manuals without notification.

2. Product Introduction

SP HDD Lock Utility provides supported Silicon Power devices with HDD password features, which are designed to help you protect your personal data.

With the use of SP HDD Lock Utility, you are able to enable password protection, lock/unlock the HDD, or disable password protection if you don’t want to use this feature more.

3. System Requirements

- Operating System: Microsoft Windows 8.1/ 8 / 7 / Vista / XP, For Windows® only
- USB 2.0 or 3.0 ports to Connect SP supported HDD.
- SP HDD Lock Utility (free download from SP website)

4. Getting Started

4.1 Installing SP HDD Lock Utility

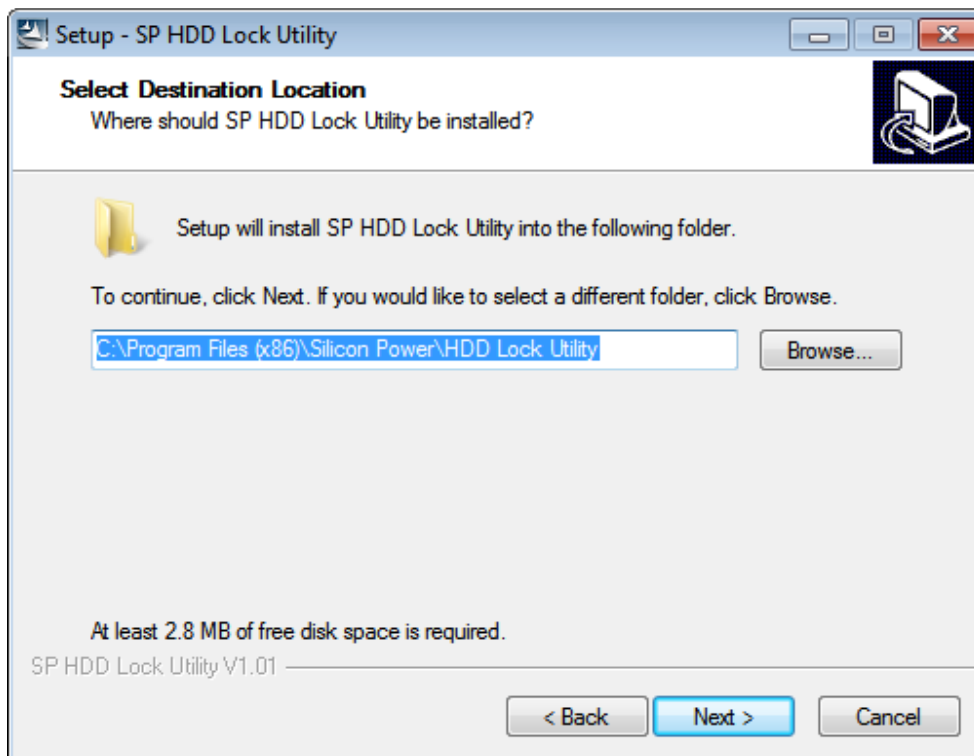
Before using SP HDD Lock Utility, go to Silicon Power's official website to download the software first. <http://www.silicon-power.com>

- 1) Double-click the SP HDD Lock Utility file to display the setup Wizard

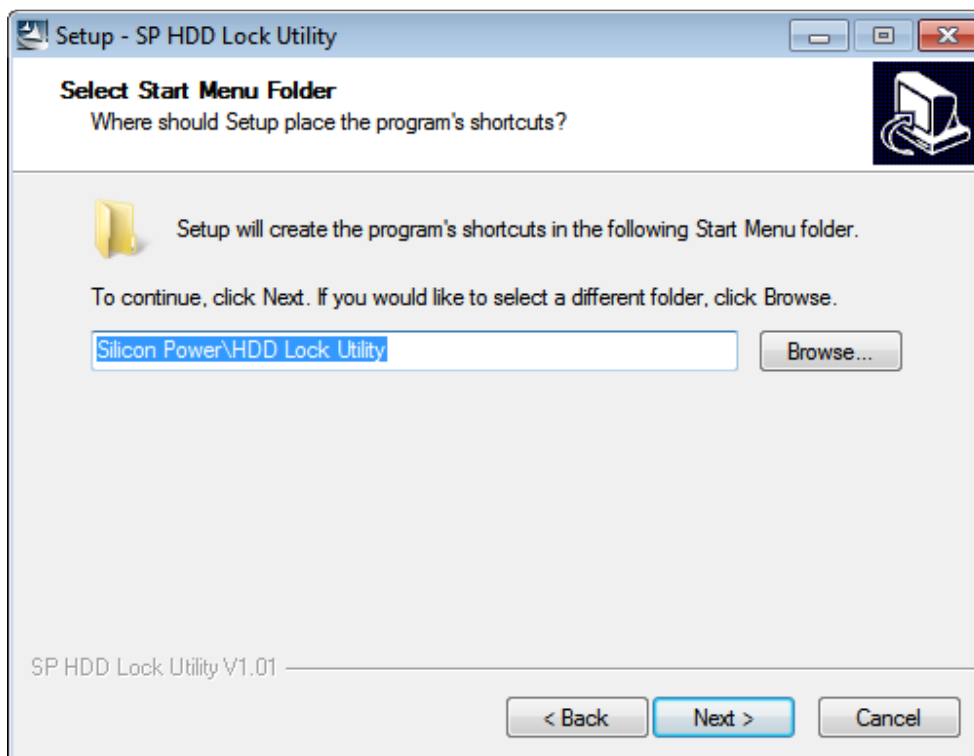


Note: Some users may enable Windows User Account Control (UAC), if you do and see the dialog, please click yes to continue installation process.

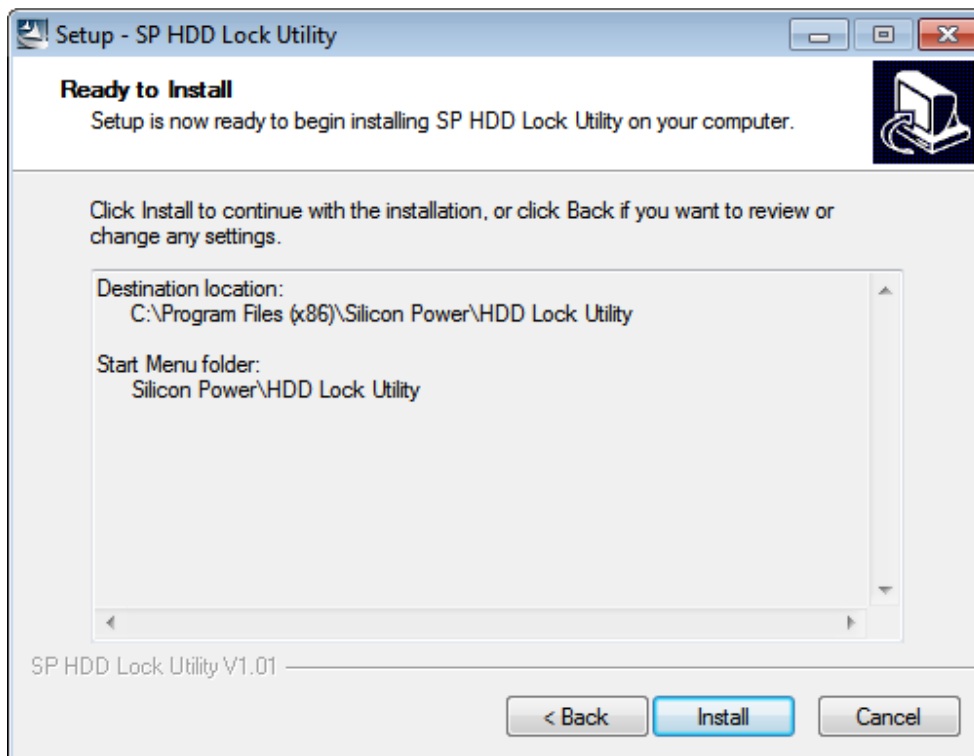
2) Click Next to select install destination location.



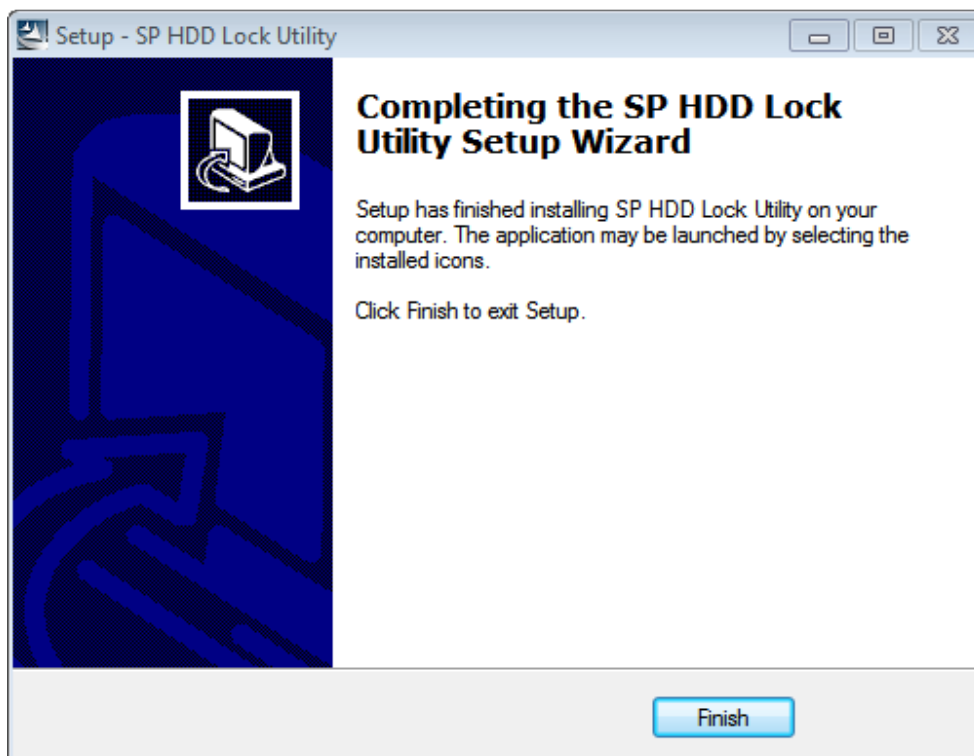
3) Click Next to select start menu folder.



4) Click Next to be ready to install.

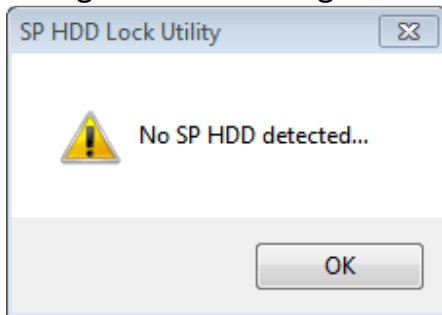


5) Click install.



6) Click Finish to complete the setup.

If no supported HDD is connected to the computer, you will see No SP HDD detected dialog as the following.

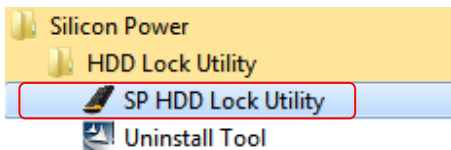


4.2 Enable password protection

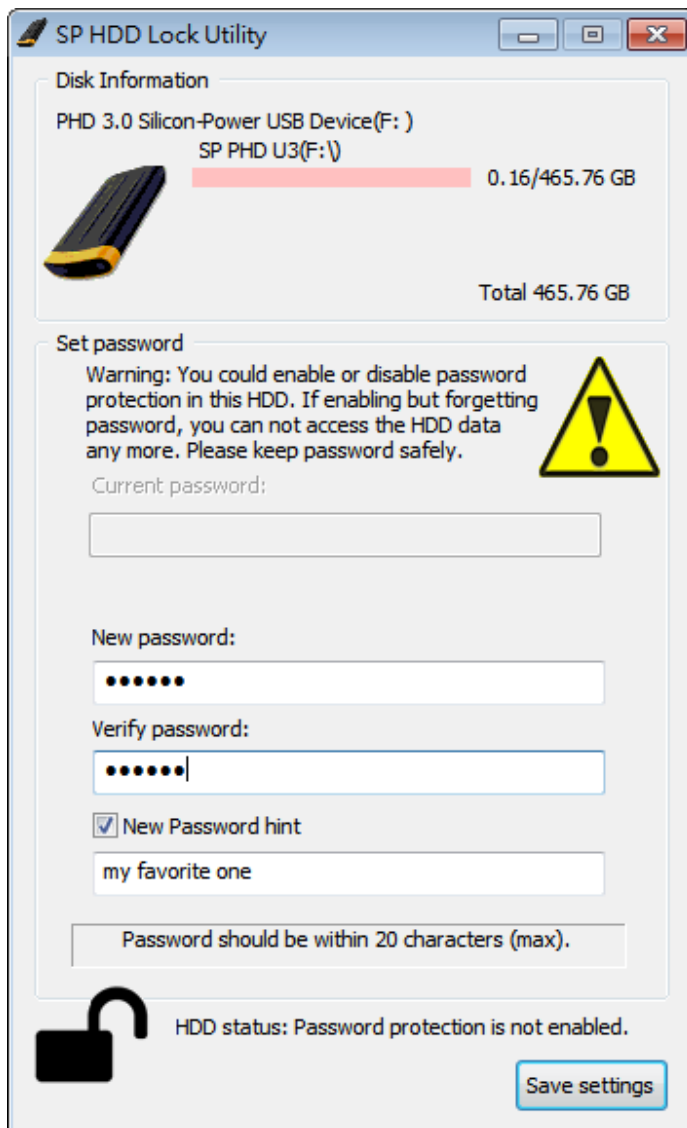
You could find SP HDD Lock Utility icon displayed in the system tray portion of the Windows taskbar.



Click this icon or click the icon from Start>all Programs> as the following



You could find the dialog window to set password and password hint.



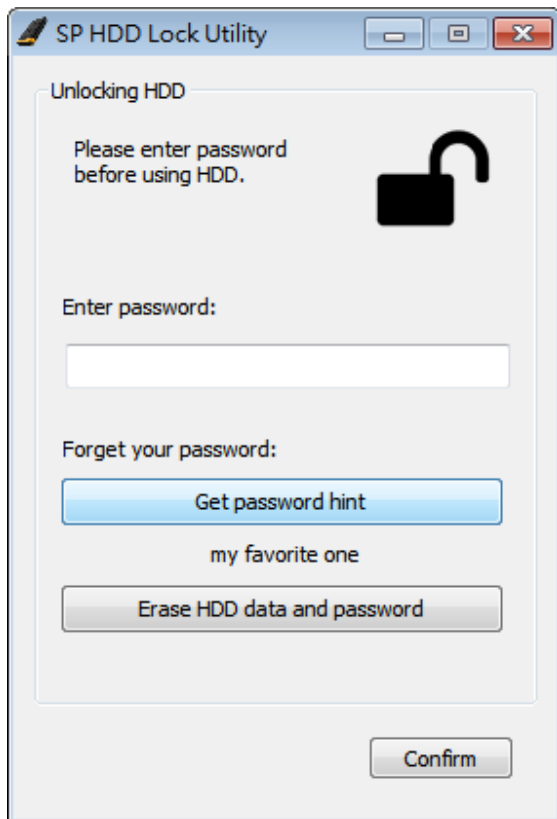
Note:

- 1) If you haven't set password, you could use this HDD as normal one without password protection function.
- 2) If you have multiple supported HDDs, please enable/disable password protection for one HDD each time.
- 3) The "Disk Information" in the windows dialog will show you which HDD is in working to enable/disable password protection.

4.3 Unlock HDD after enable password protection

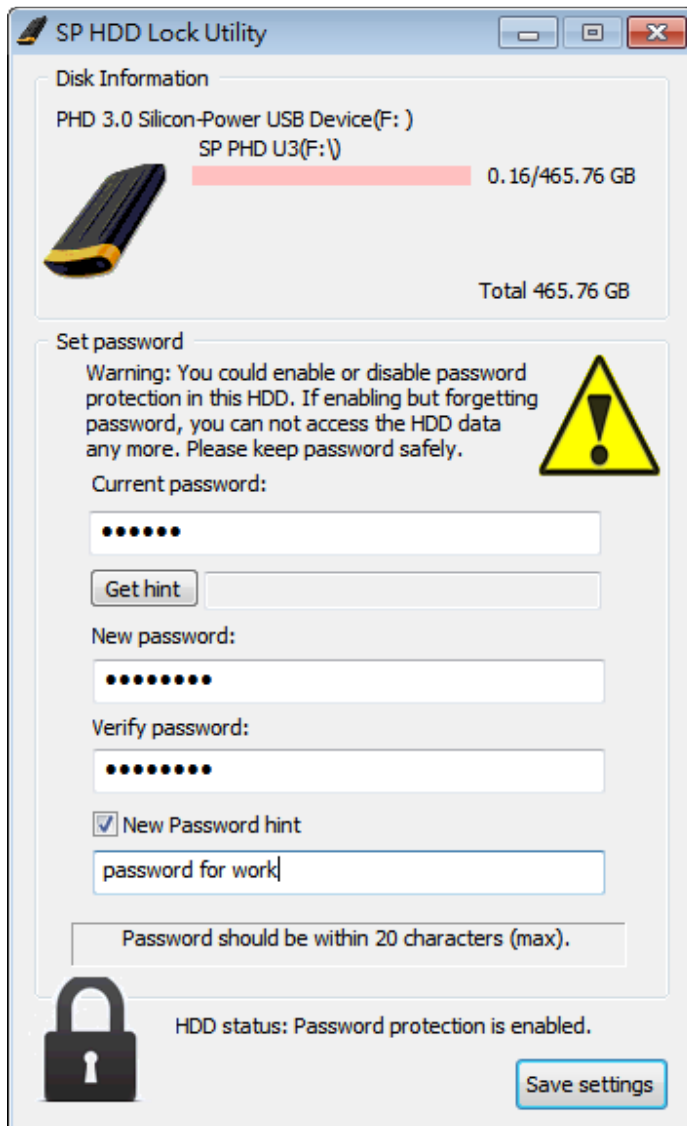
After enabling password protection function, please unplug/plug HDD, password is needed to unlock the device.

If you forgot password, you could get password hint by clicking “Get password hint” icon.



4.4 Change password

After setting password, you could change password by typing current password and new password

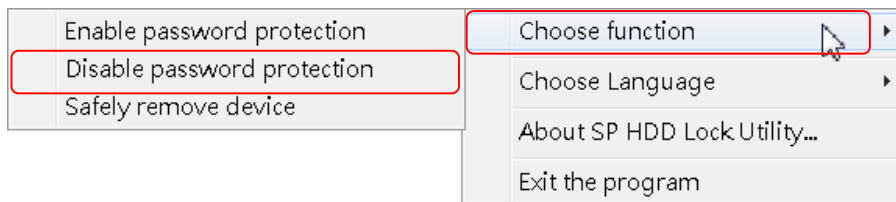


4.5 Disable password protection

You could disable password protection if you don't want to use password anymore. Right Click the icon displayed in the system tray portion of the Windows taskbar.

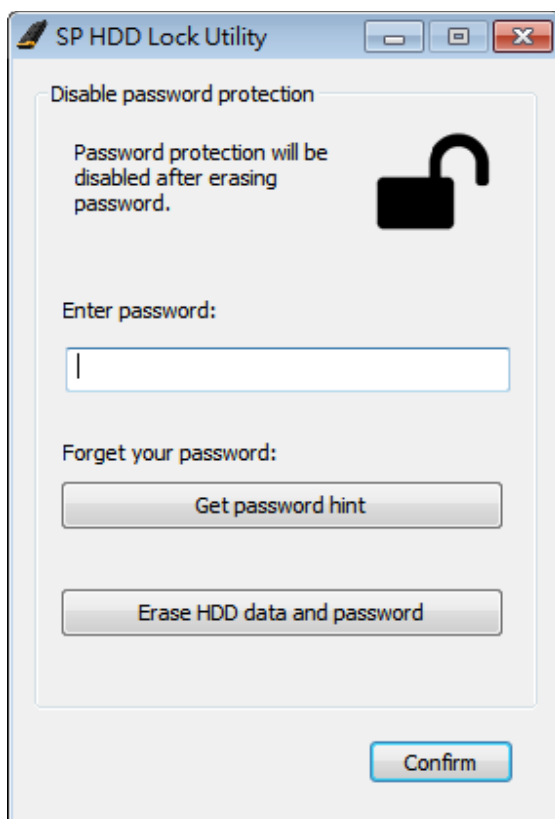


Move the cursor to "choose function", you will find the icon to disable password protection.



Password is needed to disable the protection.

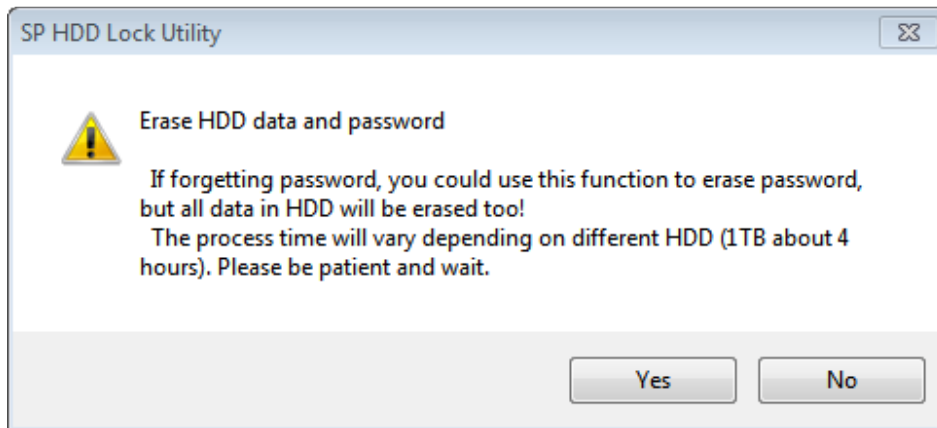
If forgetting password, you can get password hint or erase HDD data and password.



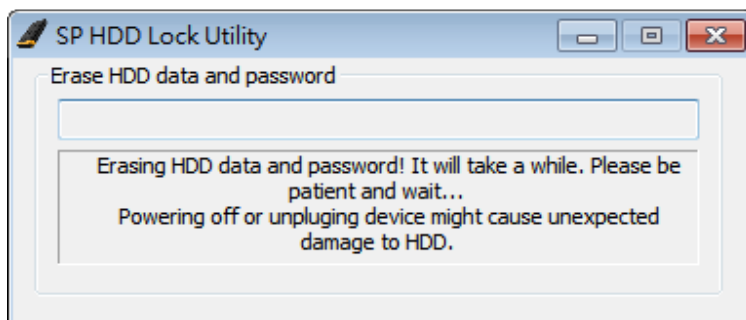
Please keep your password safely.

If enabling but forgetting password, you can not access the HDD data any more.

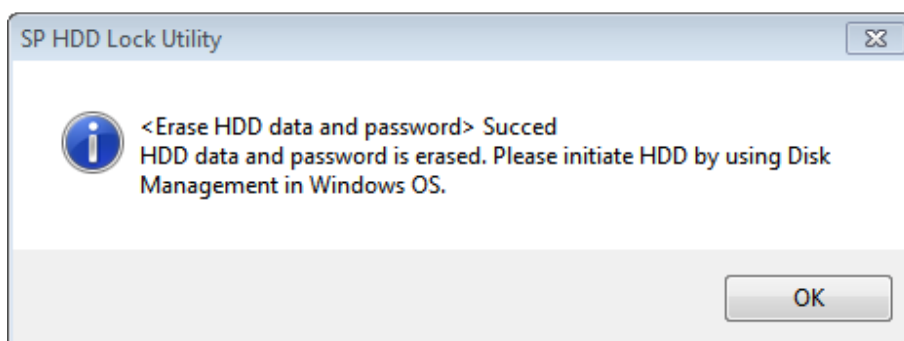
The windows dialog to erase HDD data and password are as the following.



Click yes to start erasing HDD data and password.



HDD data and password is erased.

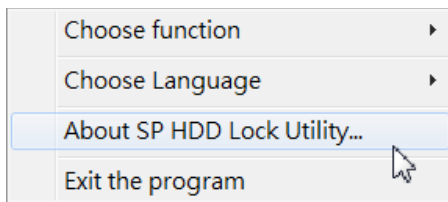


5. About SP HDD Lock Utility

Right Click the icon displayed in the system tray portion of the Windows taskbar.



Move the cursor to “About SP HDD Lock Utility”, you will find the icon to check the utility version.



Go to SP web site to get the latest version if necessary.

