

SP Widget Users' Manual

Contents

| | |
|---|----|
| 1. Intellectual Property & Copy Rights | 5 |
| 2. Product intro | 6 |
| 3. System requirements | 6 |
| 4. Introduction | 7 |
| 4.1 Activating SP Widget | 7 |
| Illustration 4.1 | 7 |
| 4.2 Browser interface | 7 |
| Illustration 4.2 | 7 |
| 4.3 SP Widget browser function explained | 8 |
| Illustration 4.3.1 | 8 |
| Illustration 4.3.2 | 8 |
| Illustration 4.3.3 | 9 |
| Illustration 4.3.4 | 9 |
| Illustration 4.3.5 | 10 |
| Illustration 4.3.6 | 10 |
| Illustration 4.3.7 | 11 |
| Illustration 4.3.8 | 11 |
| Illustration 4.3.9 | 12 |
| Illustration 4.3.10 | 12 |
| Illustration 4.3.11 | 13 |
| Illustration 4.3.12 | 13 |
| Illustration 4.3.13 | 14 |
| Illustration 4.3.14 | 14 |
| 5. My documents backup explained | 15 |
| Illustration 5.1 | 15 |
| Illustration 5.2 | 15 |
| Illustration 5.3 | 16 |
| Illustration 5.4 | 17 |
| 6. Folder backup function explained | 17 |
| Illustration 6.1 | 17 |
| Illustration 6.2 | 18 |
| Illustration 6.3 | 19 |
| Illustration 6.4 | 19 |
| Illustration 6.5 | 20 |
| Illustration 6.6 | 20 |
| Illustration 6.7 | 21 |
| Illustration 6.8 | 21 |
| 7. Data encryption function explained | 22 |
| Illustration 7.1 | 22 |
| Illustration 7.2 | 22 |
| Illustration 7.3 | 23 |
| Illustration 7.4 | 23 |
| Illustration 7.5 | 24 |
| 8. My Favorites backup function explained | 25 |
| Illustration 8.1 | 25 |

| | |
|--|----|
| 9. Email backup function explained | 26 |
| Illustration 9.1 | 26 |
| Illustration 9.2 | 26 |
| Illustration 9.3 | 27 |
| Illustration 9.4 | 28 |
| 10. Overview of Project Backup Function | 29 |
| Illustration 10.1 | 29 |
| Illustration 10.2 | 30 |
| Illustration 10.3 | 31 |
| Illustration 10.4 | 31 |
| Illustration 10.5 | 32 |
| Illustration 10.6 | 32 |
| Illustration 10.7 | 33 |
| Illustration 10.8 | 33 |
| Illustration 10.9 | 34 |
| Illustration 10.10 | 35 |
| Illustration 10.11 | 35 |
| Illustration 10.12 | 36 |
| Illustration 10.13 | 36 |
| Illustration 10.14 | 37 |
| Illustration 10.15 | 38 |
| Illustration 10.16 | 38 |
| Illustration 10.17 | 39 |
| Illustration 10.18 | 39 |
| 11. PC-Lock function explained | 40 |
| Illustration 11.1 | 40 |
| Illustration 11.2 | 41 |
| Illustration 11.3 | 41 |
| 12. Norton software download | 42 |
| Illustration 12.1 | 42 |
| 13. Storage device info | 43 |
| Illustration 13.1 | 43 |
| 14. About Silicon Power | 44 |
| Illustration 14.1 | 44 |
| 15. Software update | 45 |
| Illustration 15.1 | 45 |
| 16. Language selection | 46 |
| Illustration 16.1 | 46 |
| 17. Scan Storage Media | 47 |
| Illustration 17.1 | 47 |
| 18. Right System Key Encryption System | 48 |
| Illustration 18.1 | 48 |
| Illustration 18.2 | 49 |
| Illustration 18.3 | 49 |
| Illustration 18.4 | 50 |
| Illustration 18.5 | 50 |

| | |
|---------------------------------|----|
| Illustration 18.6 | 51 |
| Illustration 18.7 | 52 |
| Illustration 18.8 | 52 |
| Illustration 18.9 | 53 |
| Illustration 18.10 | 53 |
| Illustration 18.11 | 54 |
| Illustration 18.12 | 54 |

1. Intellectual Property & Copy Rights

The Silicon Power's SP Widget Users' Manual is to provide information and service to users. All contents (including but not limited to text, illustrations, videos, other forms of information, etc.) are the intellectual property rights of Silicon Power and their respective owners. All contents are protected by copy right and intellectual property right legislations. Silicon Power reserves all rights and without the written consent of Silicon Power, all contents must not be distributed or duplicated in any form or way.

Disclaimer Notice

This software service is provided "as is" and is free of charge. The software service does not provide guarantee of any form. Silicon Power shall not be liable for the use of this software service that has resulted in damage in any form (software data loss, hardware failure, etc.) nor shall Silicon Power be held liable for damages that occurred directly, indirectly or accidentally.

Silicon Power reserves the right to edit this users' manual at anytime without prior notice!

2. Product intro

SP Widget can provide Silicon Power Storage devices with practical applications and functionality. Most importantly, secure your personal data with data encryption capability.

With SP Widget, your Silicon Power Storage device will be equipped with the following functions:

- Synchronized backup of “My document” folder or other designated folder(s)
- Backup folders to Silicon Power portable storage device and protected by data encryption
- Restore and backup Internet Explorer’s “My Favorites”
- Restore and backup Outlook and Outlook Express emails
- Password, time designation, Storage device (only for pen drive) PC-Lock functionalities

3. System requirements

- Operating system: Microsoft Windows 7 / XP / Vista
- CPU: Intel Pentium III or faster
- System memory: 1GB or more
- Hard drive space: 12 MB or more
- USB connection
- Internet browser software: Internet Explorer V5.0 or later
- Email software: Microsoft Outlook 2000(V9.0) / Microsoft Outlook Express V5.0 or later
- Download link:
http://www.silicon-power.com/support/support_download.php

4. Introduction

4.1 Activating SP Widget

To activate SP Widget, you must first plug in a Silicon Power Storage device to your PC's USB connection. Once plugged in, double click on "My Computer" to access the computer's file explorer and the installed Silicon Power Storage device should appear as one of the drives with a letter designation, such as E: or F:; please copy SP-Widget.exe to the Silicon Power Storage device and double click on it as shown in Illustration 4.1.



Illustration 4.1

When you use another computer, you must retain the SP-Widget.exe file to continue to use the application and its functions.

4.2 Browser interface

SP-Widget will show the following page upon every startup



Illustration 4.2

4.3 SP Widget browser function explained

Click on **“My Documents backup”** to initiate “My Document” folder synchronization backup functionality, shown in illustration 4.3.1.



Illustration 4.3.1

Click on **“Folder backup”** to designate folder(s) for backup and synchronization functions, shown in illustration 4.3.2.

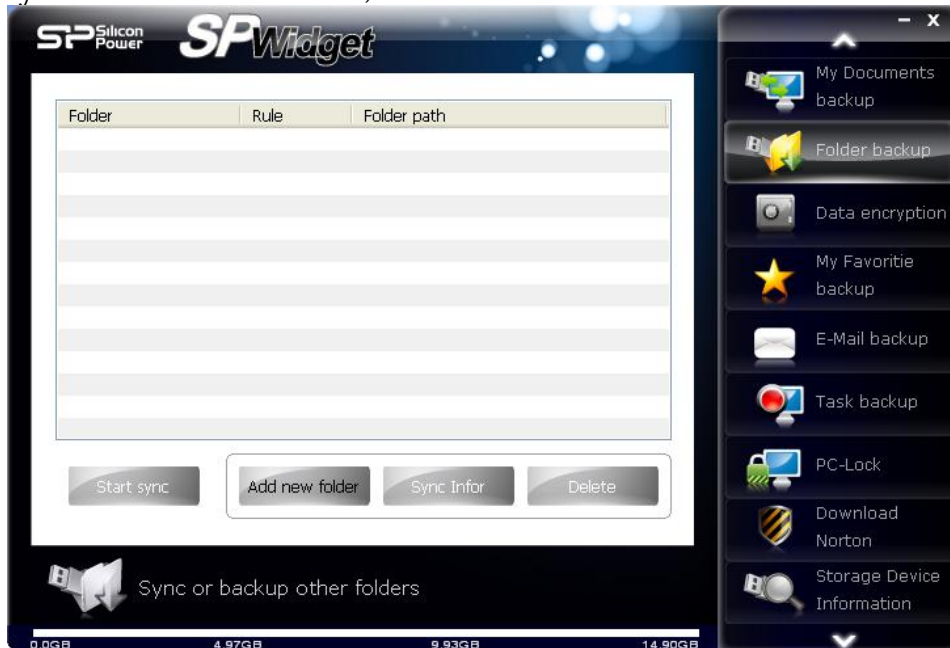


Illustration 4.3.2

Click on **"Data encryption"** and place folders into the USB flash drive for data encryption as shown in illustration 4.3.3.



Illustration 4.3.3

Click on **"My Favorites backup"** to restore and backup my favorites as shown in illustration 4.3.4.



Illustration 4.3.4

Click on **"Email backup"** to restore and backup Outlook/Outlook Express emails as shown in illustration 4.3.5.



Illustration 4.3.5

Click on **"Task backup"**. You can configure this to follow up with the "schedule", "manual" or "fast backup button" (only supported with storage media in which a quick backup key is provided) for a backup function to restore a file . See Figure 4.3.6.

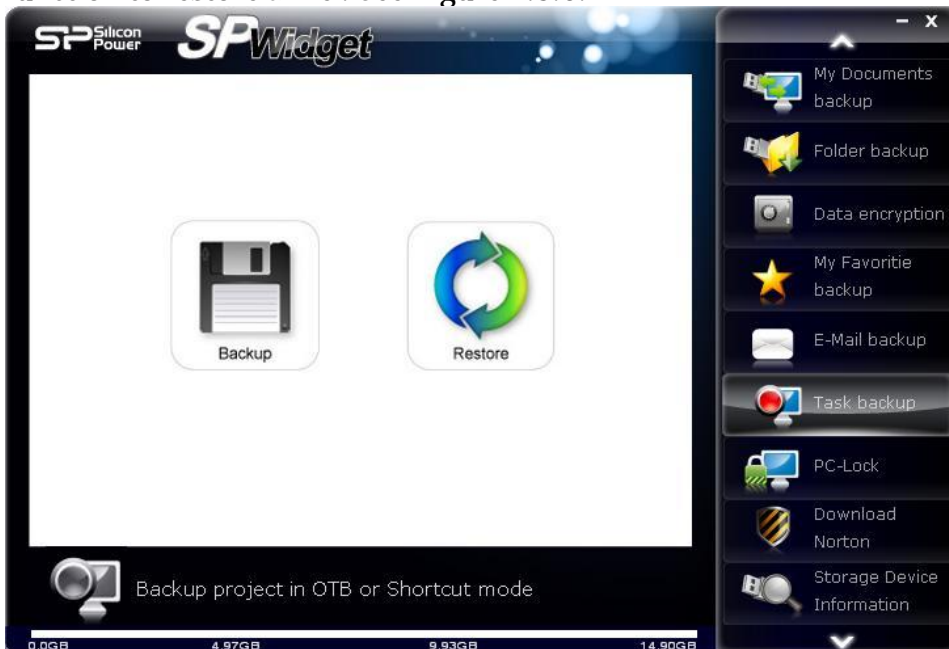


Illustration 4.3.6

Click on **"PC-lock"** and it will provide "password", "time designation" and "Storage device" PC-Lock functionalities to protect your computer, shown in illustration 4.3.7.

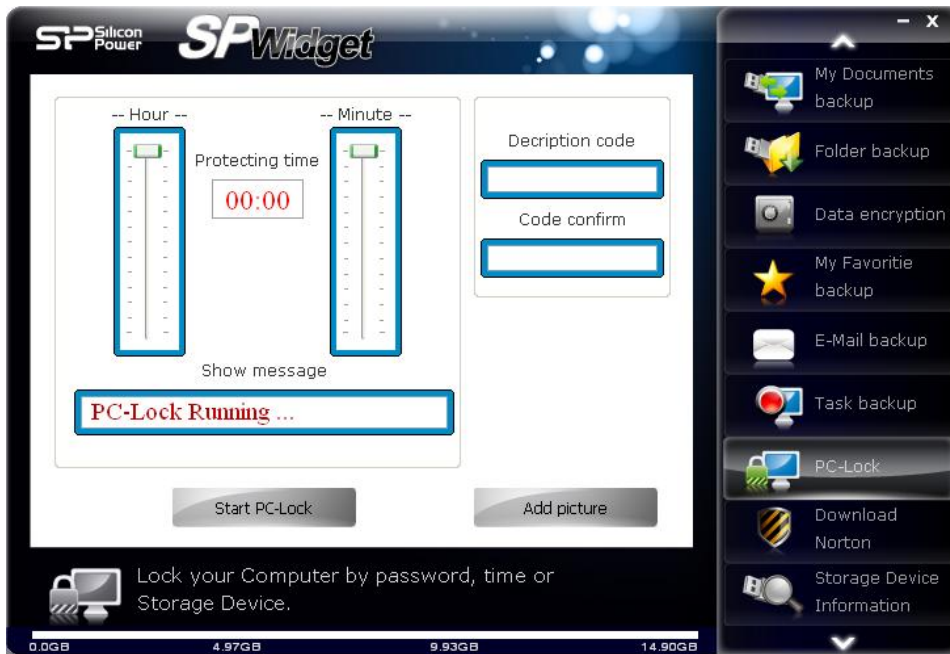


Illustration 4.3.7

Click on **"Download Norton"** to get your free 60-day trial version of Norton Internet Security 2017, shown in illustration 4.3.8.



Illustration 4.3.8

Click on **"Storage Device Information"** to acquire detail information on your Silicon Power Storage device as shown in illustration 4.3.9.

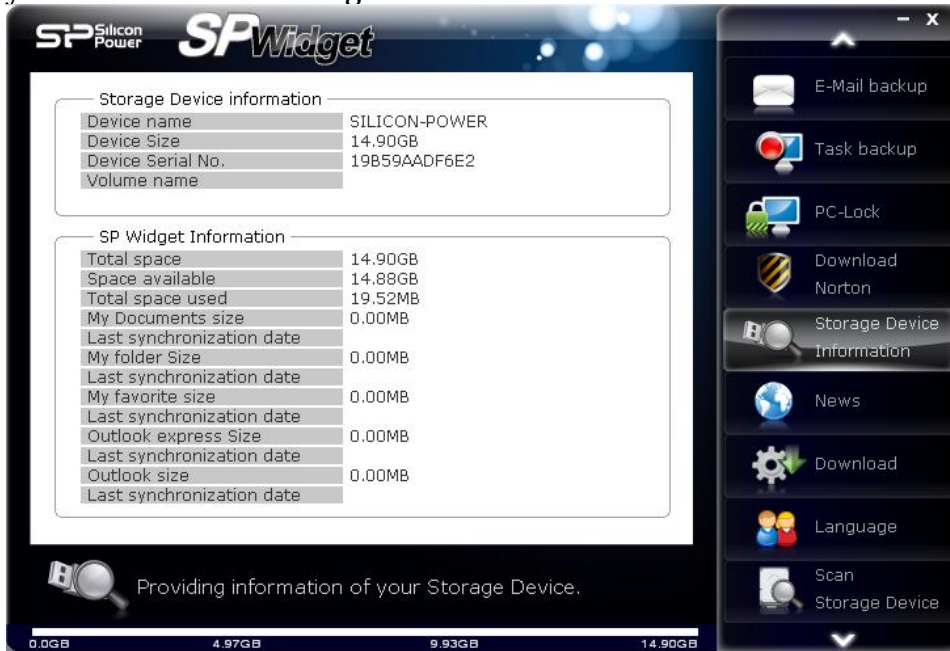


Illustration 4.3.9

Click on **"News"** to acquire more Silicon Power news and the latest product information as shown in illustration 4.3.10.



Illustration 4.3.10

Click on **"Download"** to download the latest SP Widget, SP Widget User Manual and other Silicon Power software, shown in illustration 4.3.11.



Illustration 4.3.11

Click on **"Language"** to choose the language that best suits you, shown in illustration 4.3.12.



Illustration 4.3.12

Click on "**Scan Storage Device**" to choose a disk or folder that you wish to scan. See Figure 4.3.13.



Illustration 4.3.13

The SP-Widget browser has a indicator meter on current storage status, shown in illustration 4.3.14.



Illustration 4.3.14

5. My documents backup explained

Click on **"My Documents backup"**, it will begin scanning for the system's current designated "My Documents" folder as show in illustration 5.1.



Illustration 5.1

Once the system has been scanned, it will display your current contents in "My Documents" as shown in illustration 5.2.

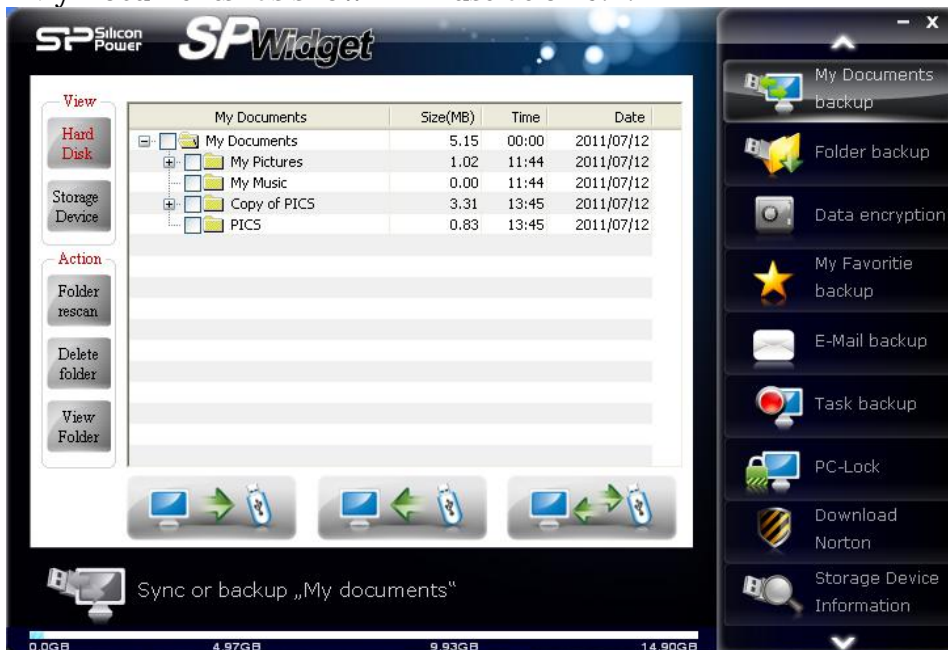


Illustration 5.2

The displayed contents will allow you to tick and select the desired folder to backup. It will show you the data size of the folder for reference comparison with your current Storage device's available storage capacity. If you backup capacity exceeds the available storage capacity, the indicator below will appear as full. In this case, please re-select your backup files to suit the remaining storage capacity. Available storage capacity indicator is merely an estimated value that represents current stored data and selected to be stored data (excluding duplicated data). Please refer to illustration 5.3.

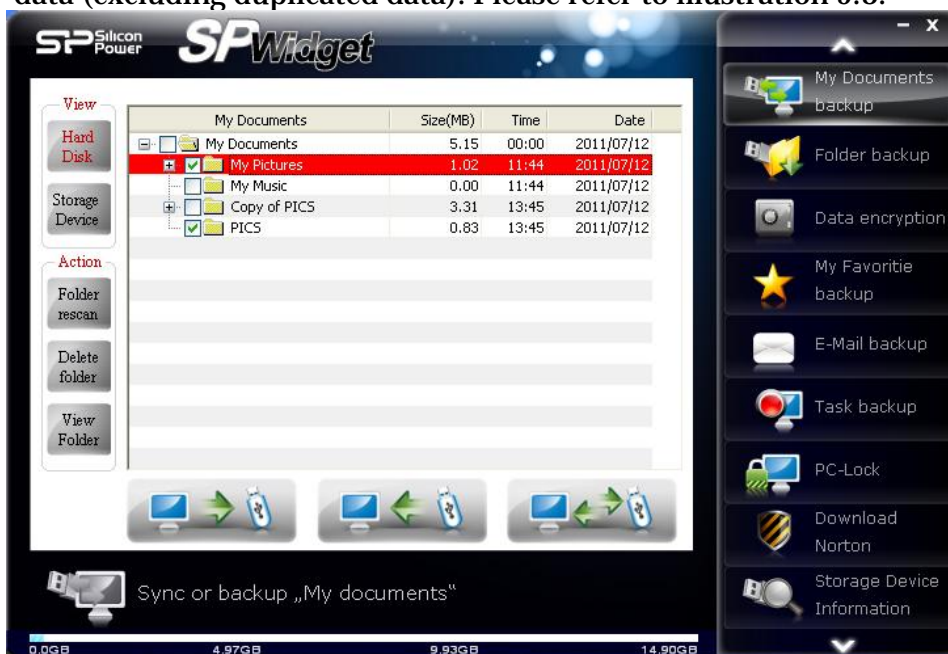


Illustration 5.3

At the bottom of the contents section, there are three options: 1. Backup from PC to Storage device, 2. Backup from Storage device to PC and 3. Synchronization backup between Storage device and PC. Please note, options 1 and 2 will overwrite existing files with the same name regardless of current or older file dates. Option 3 will overwrite older files with new ones as shown in illustration 5.4.

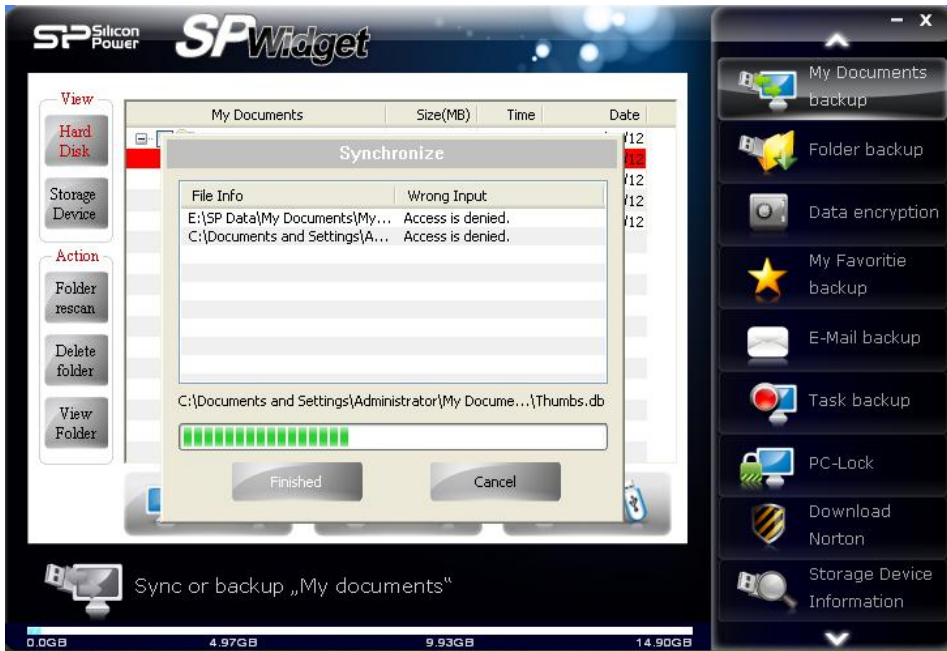


Illustration 5.4

6. Folder backup function explained

Click on **"Folder backup"** as shown in illustration 6.1

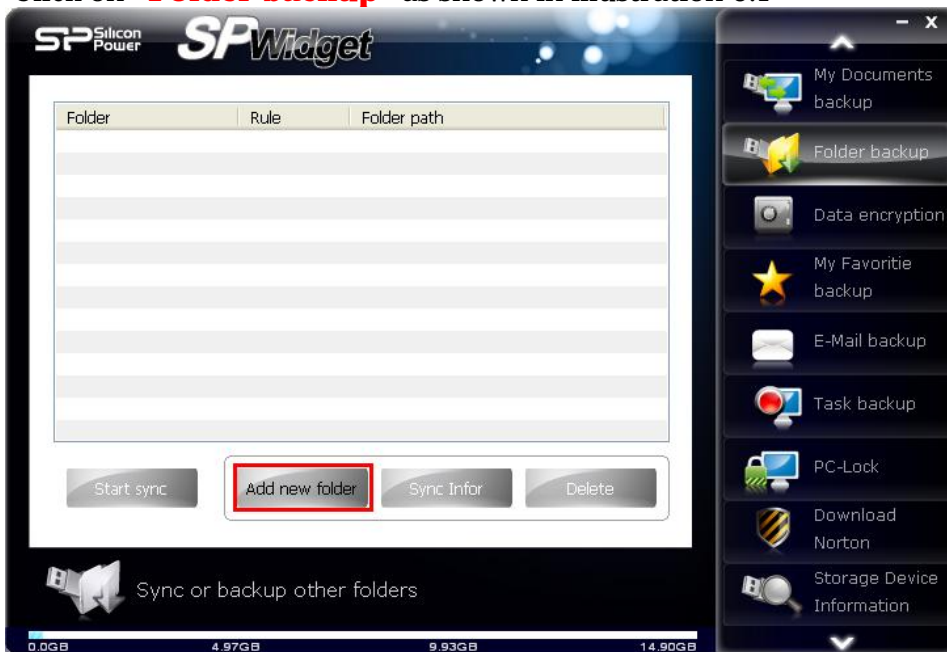


Illustration 6.1

Click on “Add new folder” as shown in illustration 6.2 and three options will be offered: 1. Backup from PC to Storage device, 2. Backup from Storage device to PC and 3. Synchronization backup between Storage device and PC

Please note, options 1 and 2 will overwrite existing files with the same name regardless of current or older file dates. Option 3 will overwrite older files with new ones as shown in illustration 5.4.



Illustration 6.2

Click on the folder icon (outlined in red) shown in illustration 6.2 to show folder options. From there, you can designate folder(s) to backup, shown in illustration 6.3.

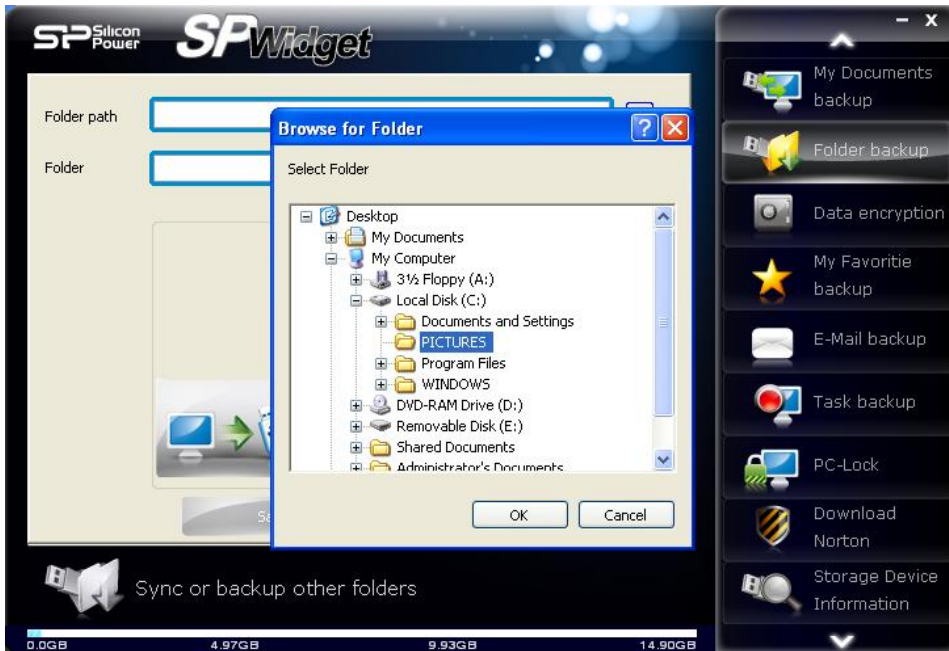


Illustration 6.3

Once selected the designated folder, click on “OK” to begin backup as shown in illustration 6.4.



Illustration 6.4

You can modify the folder name to the same folder name on the Storage device and then choose the synchronize backup function by clicking on OK as shown in illustration 6.5

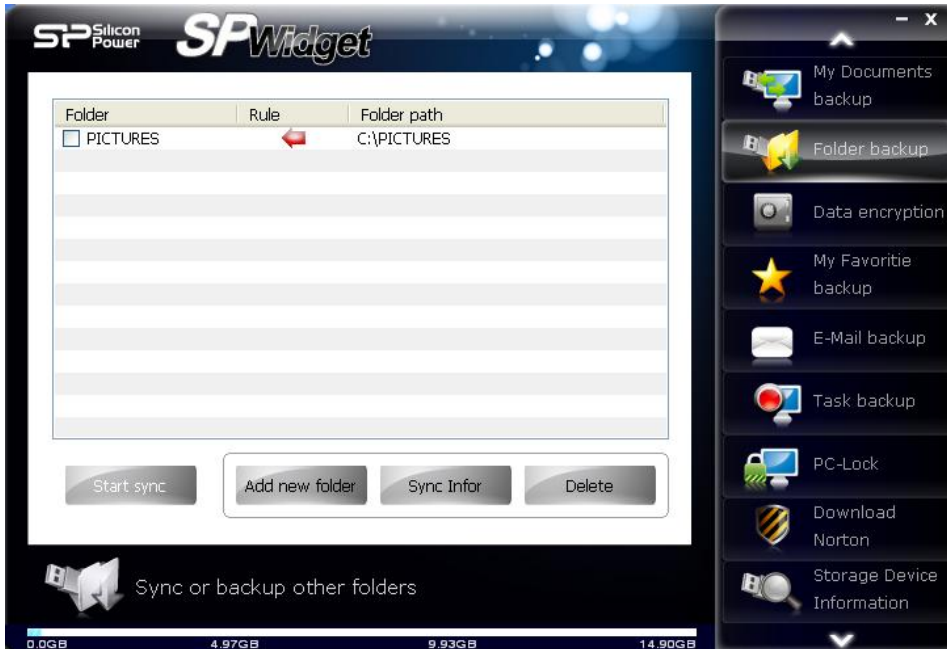


Illustration 6.5

Move the mouse pointer to the folder and left click on it. The folder should turn blue and the options, synchronized data and delete folder should become functional as shown in illustration 6.6. As shown in illustration 6.2, clicking on “Synchronized data” allows you to reset synchronization settings. If you click on “Delete folder”, the selected folder will be deleted.

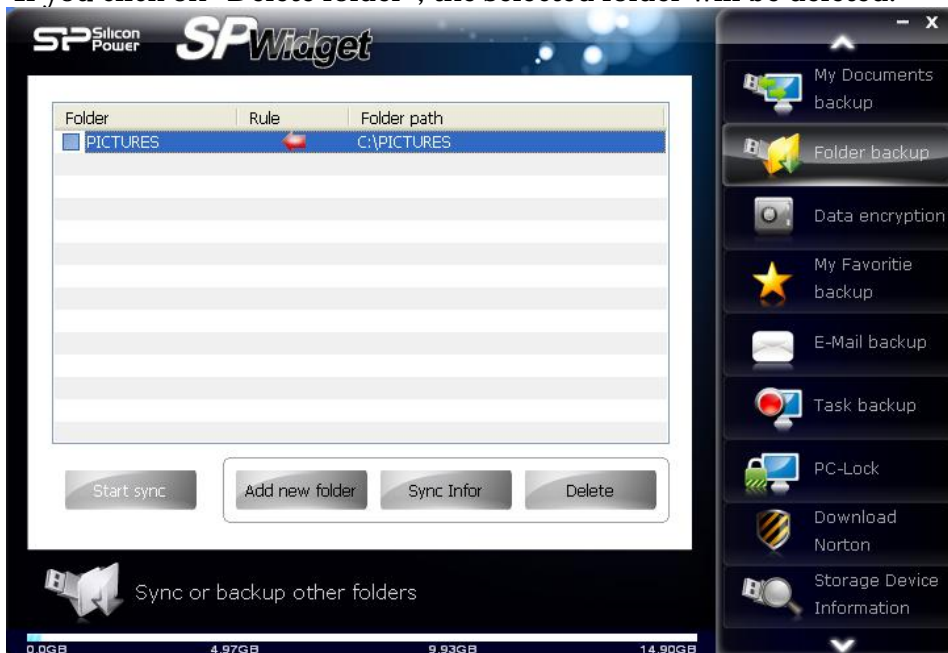


Illustration 6.6

Click on the “Data synchronization” option to reopen the synchronization settings management page. Click on “Delete folder” to delete the selected folder. Once you have selected a folder, the synchronization button will become functional as shown in illustration 6.7.

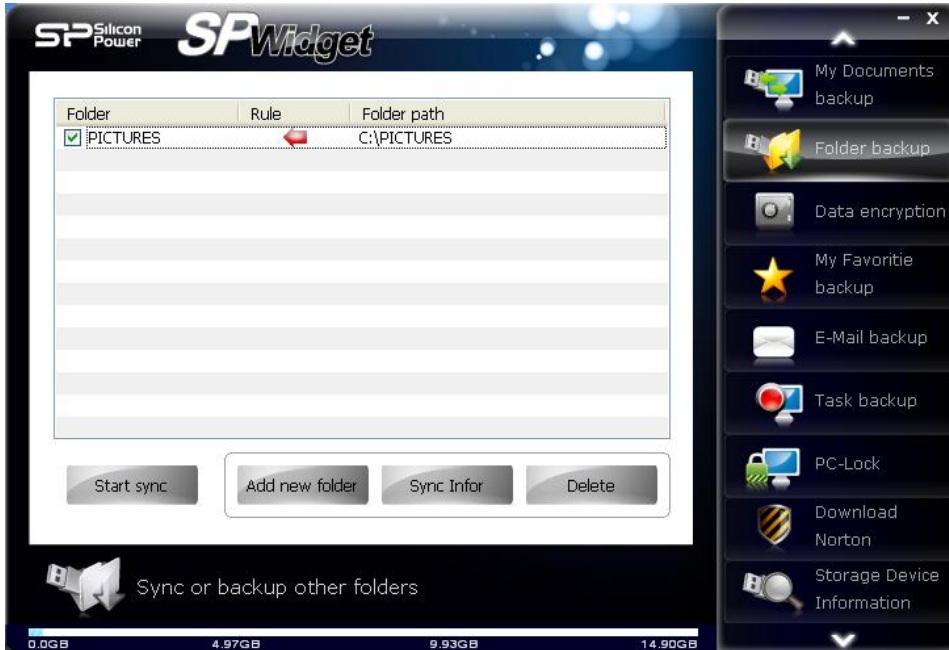


Illustration 6.7

Click on the “Begin synchronization” button to begin synchronized data backup. When backup is done, click on the “Complete” button to finish the process as shown in illustration 6.8.

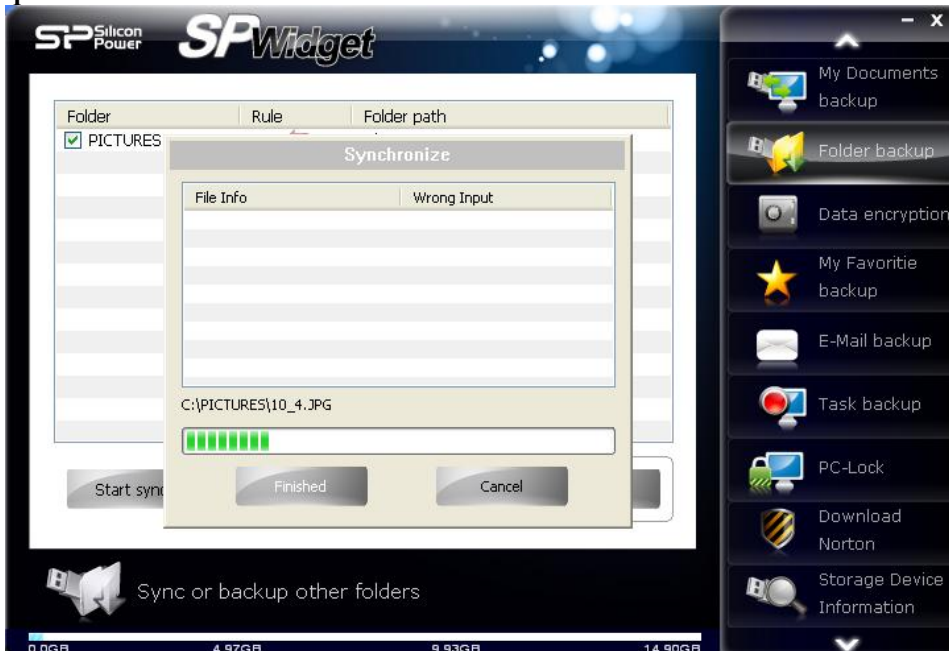


Illustration 6.8

7. Data encryption function explained

Click on **"Data encryption"** and click on the icon outlined in red to open folder browser window to select the folder for encryption as shown in illustration 7.1.



Illustration 7.1

Select the folder you wish to add encryption to as shown illustration 7.2

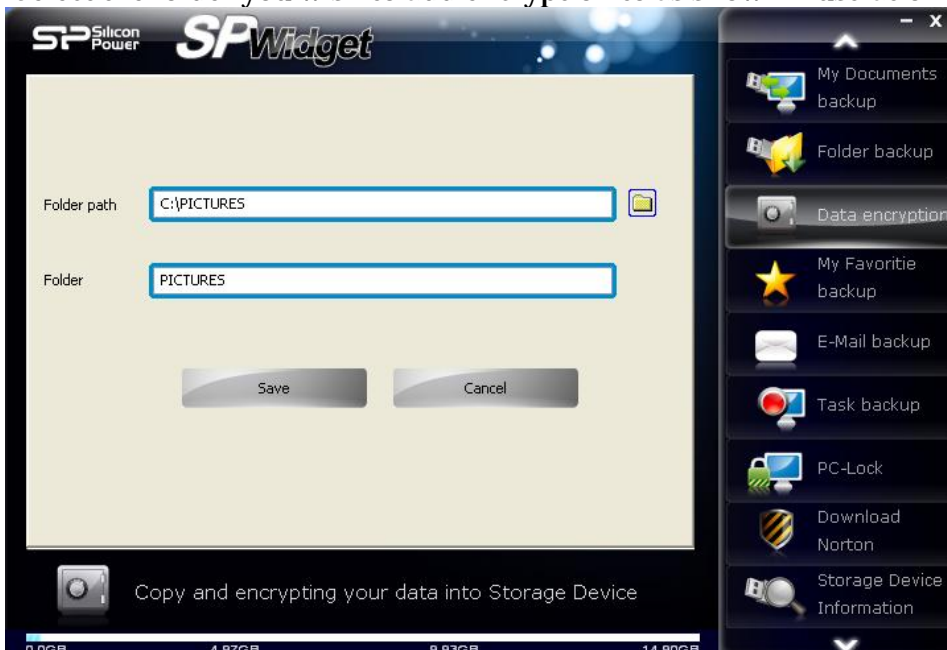


Illustration 7.2

Click on “Save” and left click on the folder (the selected folder will appear in blue), the “Encryption” and “Decryption” buttons at the bottom should appear as functional as shown in illustration 7.3.



Illustration 7.3

When you click on “Encryption” button, a window will pop up prompting for a password and password hint. Enter your desired password and password hint and click on “Encryption” to begin encrypting data. Once set, the password is essential to access this data for decryption as shown in illustration 7.4.

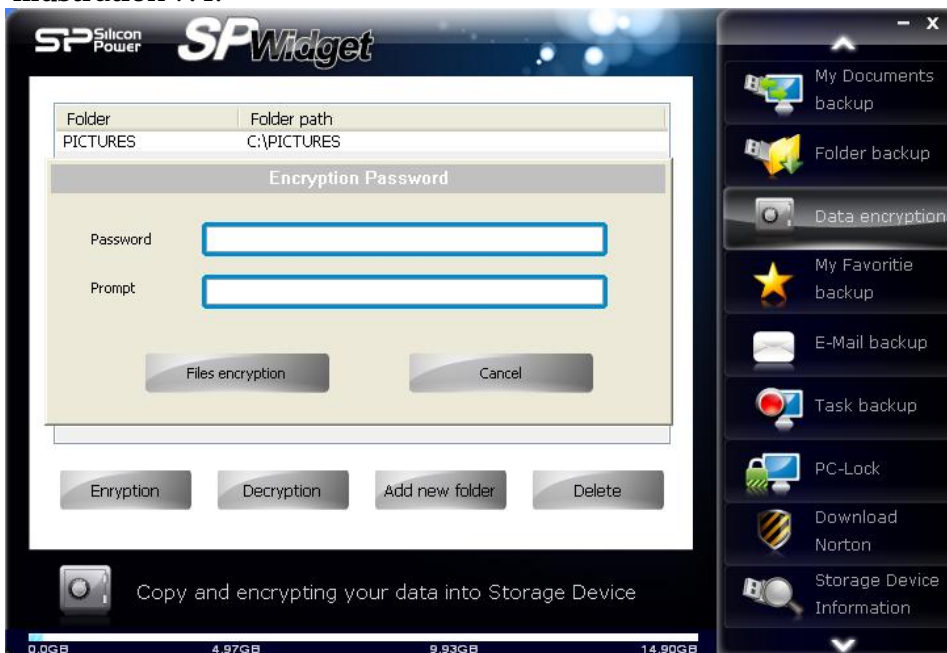


Illustration 7.4

Click on “Begin encryption” to encrypt the selected data. Once the encryption process has reached 100%, please click on the “Complete” button as shown in illustration 7.5.



Illustration 7.5

8. My Favorites backup function explained

There three ways to backup “My Favorites”:

Option 1: Backup “My Favorites” to my Storage device. Additional options will appear at the bottom (Delete existing “My Favorites” files on the Storage device). If you wish to overwrite existing My Favorites data, please select that option.

Option 2: Restore My Favorites folder to a computer

Option 3: Synchronized My Favorites data between the Storage device and the computer

As shown in illustration 8.1.



Illustration 8.1

9. Email backup function explained

Click on “**Email backup**” and two options should appear, option 1: Outlook and option 2: Outlook Express. Please select according to your email client as shown in illustration 9.1.



Illustration 9.1

When you select “Outlook”, three options will appear, option 1: “store” backed up data to Storage device, option 2: “Restore” backed up data to the computer (PC), option 3: “delete” backed up data on the Storage device as shown on illustration 9.2.

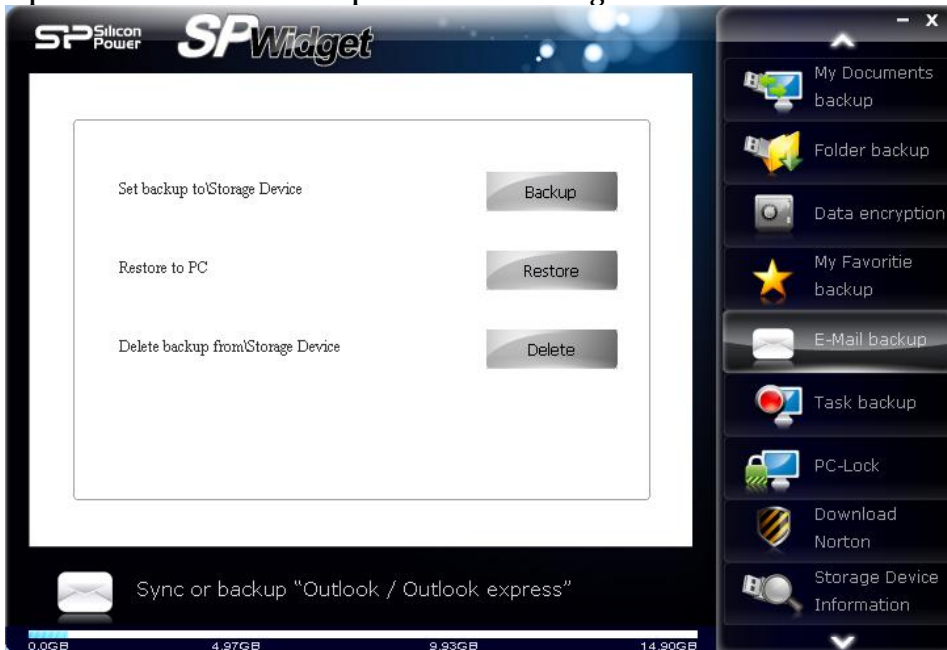


Illustration 9.2

Click on “Outlook Express” and it will allow you to backup, restore and delete Outlook Express accounts.

Three options are provided: option one (backs up to a storage device <USB Flash>), option two (restores backup files from a storage device to a computer <PC>), and option three deletes a backup from a storage device (USB Flash). See Figure 9.3.



Illustration 9.3

Select the Outlook Express account you wish to backup and click on “backup” to complete the backup process as shown in illustration 9.4.



Illustration 9.4

10. Overview of Project Backup Function

Clicking "**Task Backup**" provides two options: Option one backs up files and option two restores files. See Figure 10.1.



Illustration 10.1

Clicking Backup provides six options: Option one makes modifications (modifying internal settings for a selected task), option two is for removals (removing a selected task), option three is for a new task (adding a task), option four is for backups (performing a data backup for a selected task), option five is to view a log file (viewing the backup for a selected task and the restoration history), and option six is to conclude (exit a backup). See Figure 10.2.

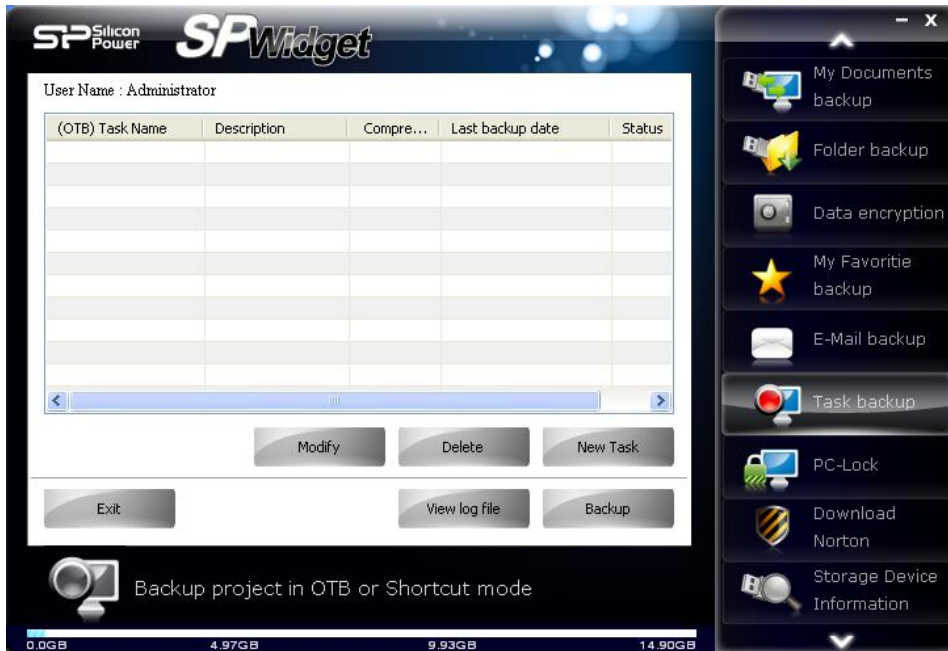


Illustration 10.2

Clicking "New Task": This will set up a task name and description notes, with three configuration options available (a fourth option will appear if the compressed backup box has been ticked) as shown in Figure 10.3. Option one first deletes backups prior to starting a task, option two is a shortcut on the desktop for a rapid backup (This option may be ticked when the task setup is complete. The desktop creates a shortcut to task name options for implementation as shown in Figure 10.4), option three is for compressed backup, with backup separated into compressed and ordinary file backups (backups can be further compressed if encryption has been ticked and if encryption has not been ticked file backup is performed ordinarily as shown in Figure 10.5 below)

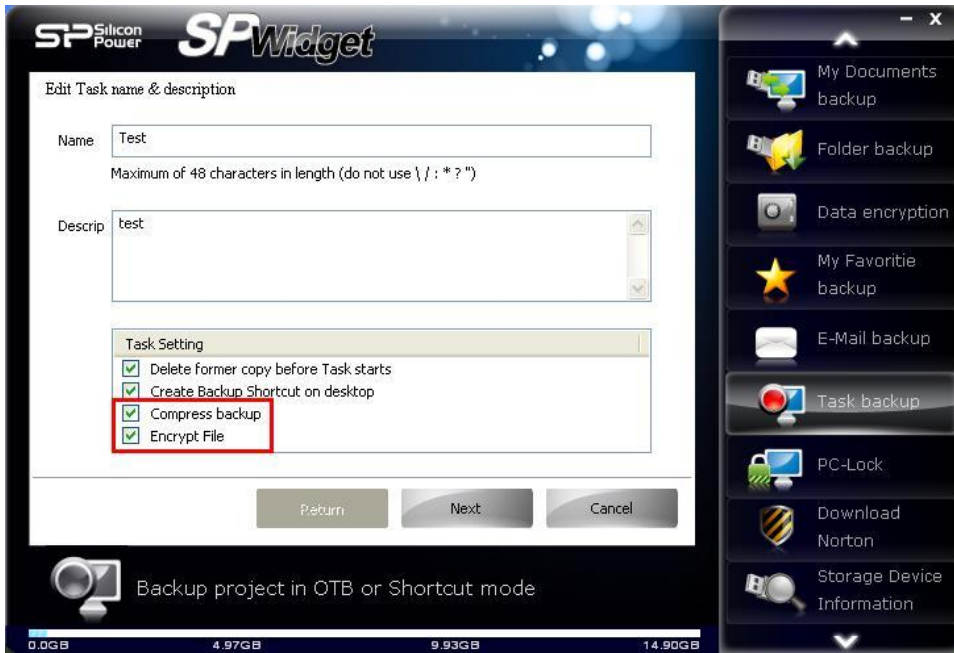


Illustration 10.3

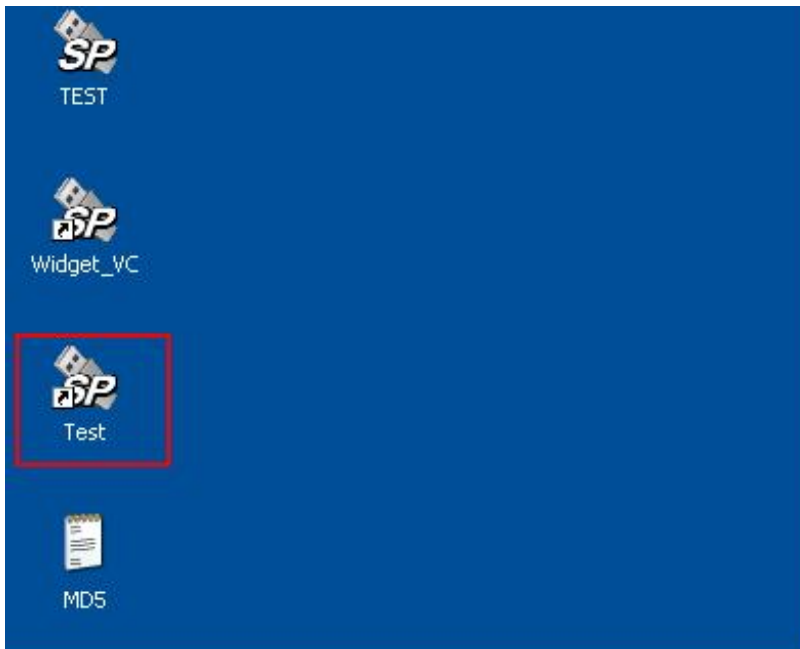


Illustration 10.4

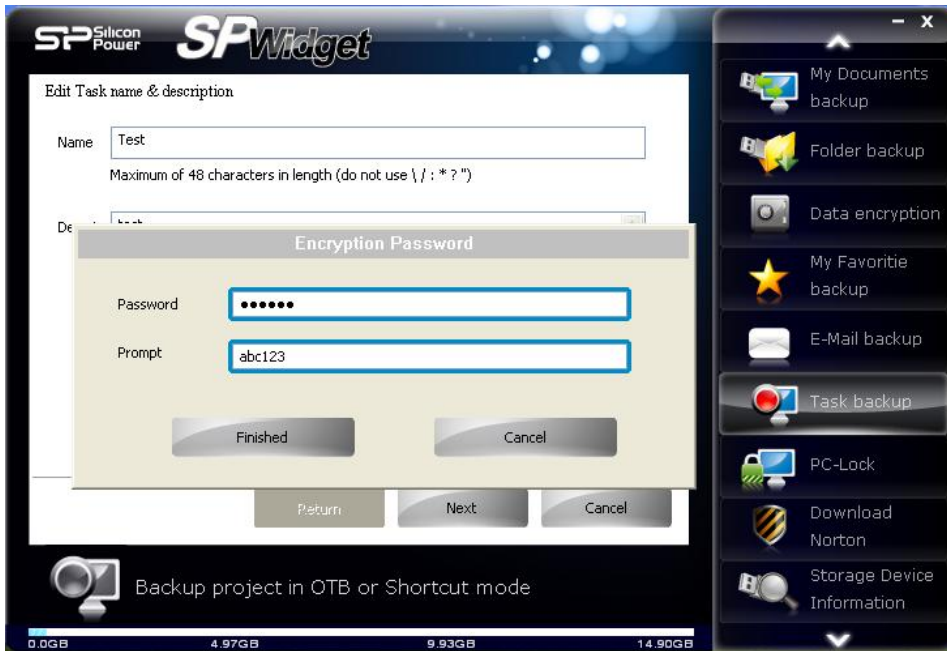


Illustration 10.5

After the settings are finished, the data for backup may be chosen, as shown in Figure 10.6. Clearing the ticked boxes (to eliminate all ticks allows new selections to be made). A view of the ticks (displaying the currently ticked data) is shown in Figure 10.7.



Illustration 10.6

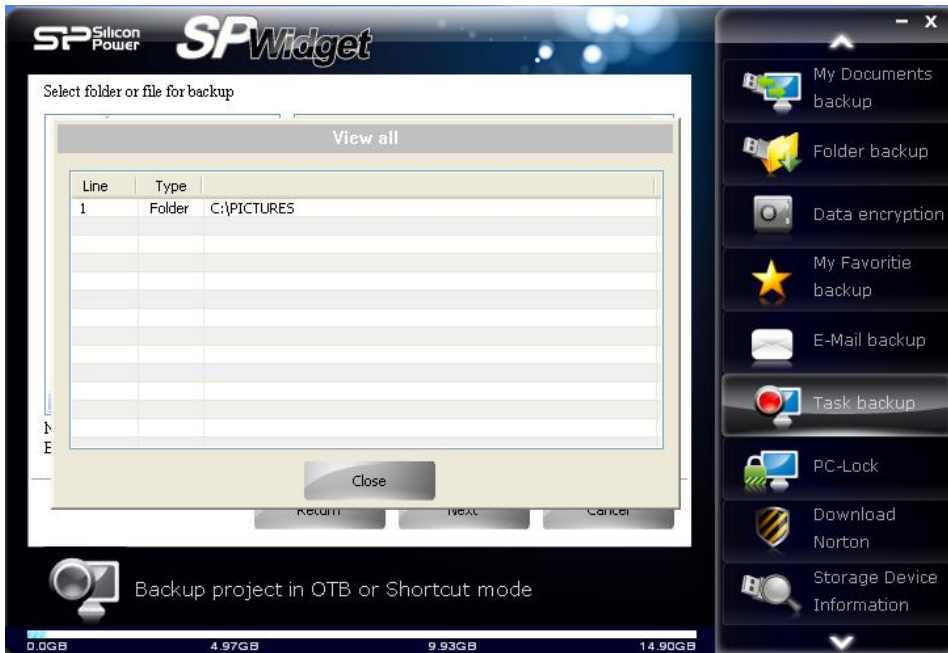


Illustration 10.7

Next, select the backup destination folder, by means of New Folder, Delete Folder, or Rename Folder. See Figure 10.8.

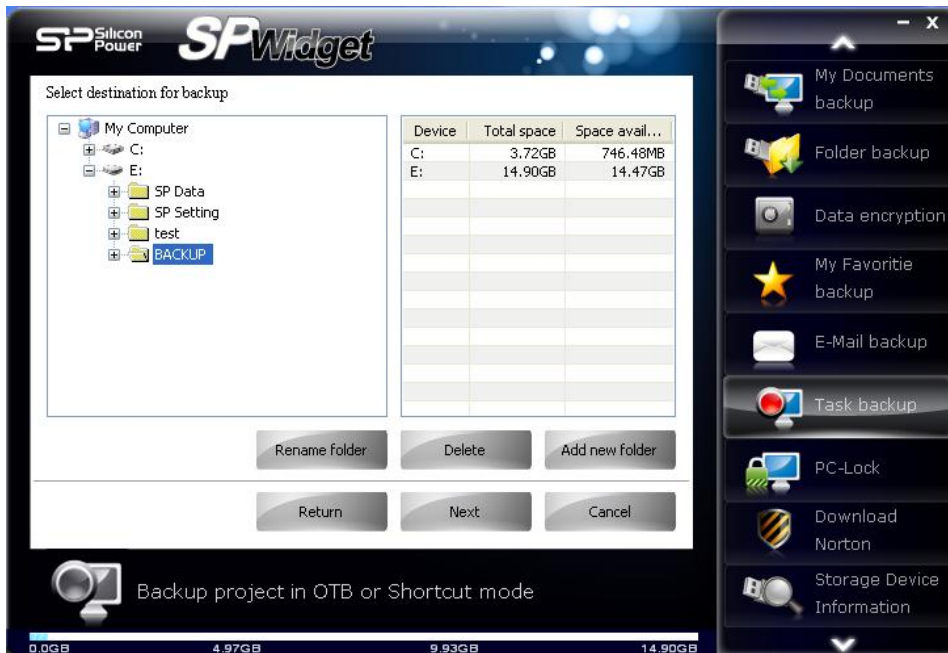


Illustration 10.8

The next step is to provide the backup schedule settings. The default is "no" (all settings must be made manually by setting tasks to perform a backup). Three options are provided for schedule settings: Option one is daily (to set a fixed execution time each day) as shown in Figure 10.9. Option two is weekly (a weekly schedule for setting an execution time) as shown in Figure 10.10. Option three is monthly (setting a monthly execution date and time, with the date to be selected shown in a red font) as shown in Figure 10.11. **Note: To execute all schedules, SP Widget software must be activated or backups will not take place.**

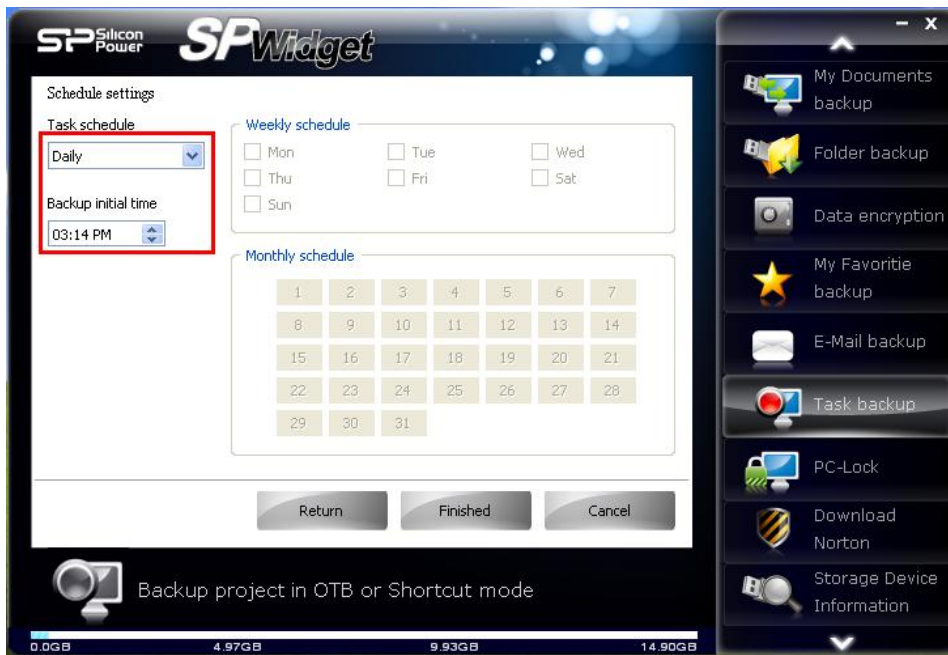


Illustration 10.9



Illustration 10.10

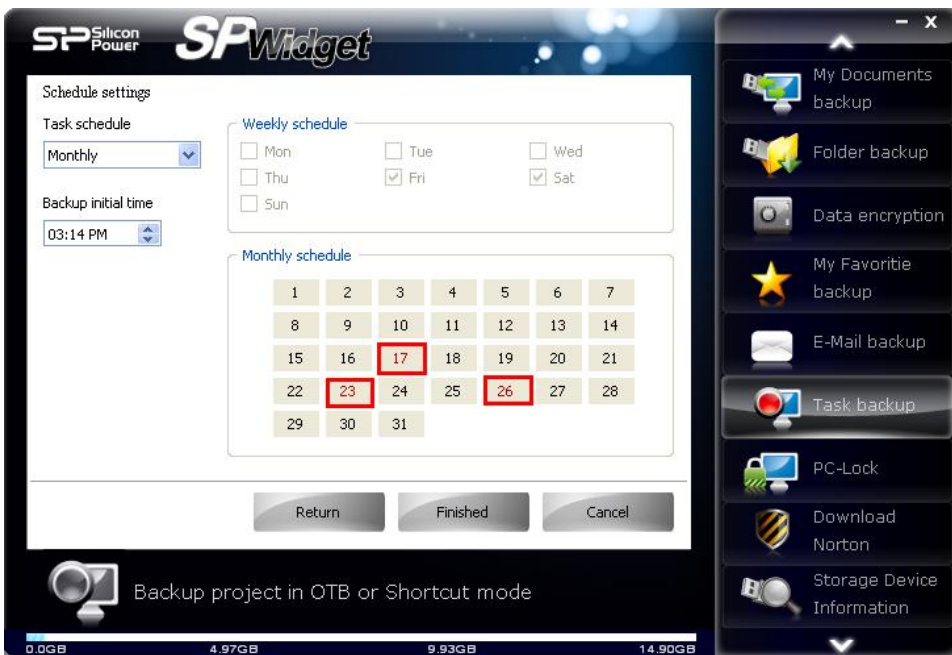


Illustration 10.11

Data backups are performed based on task settings as shown in Figure 10.12.

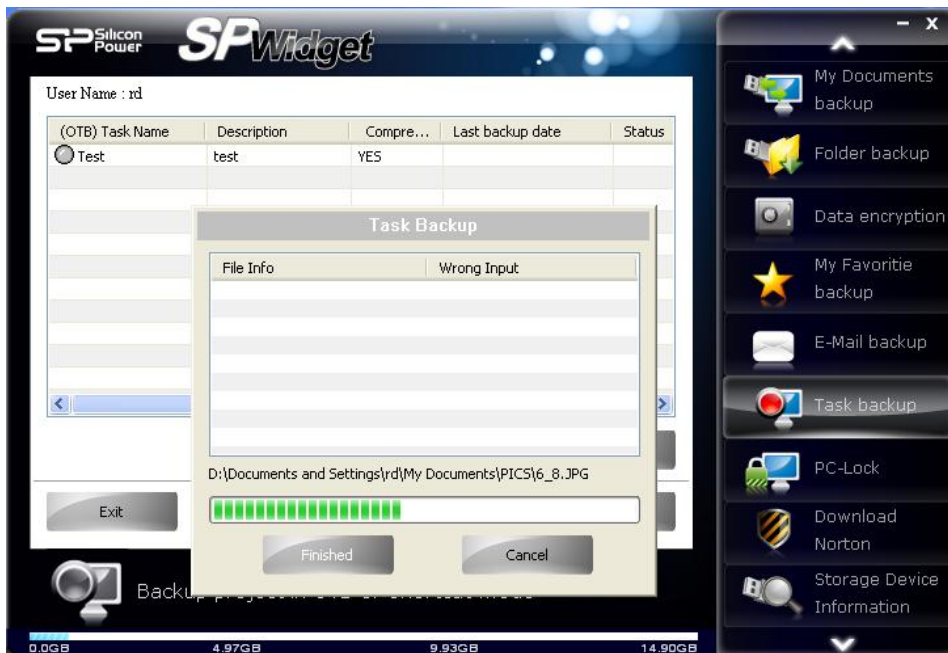


Illustration 10.12

To view a log file, select the task to display the backup and restoration history as shown in Figure 10.13.

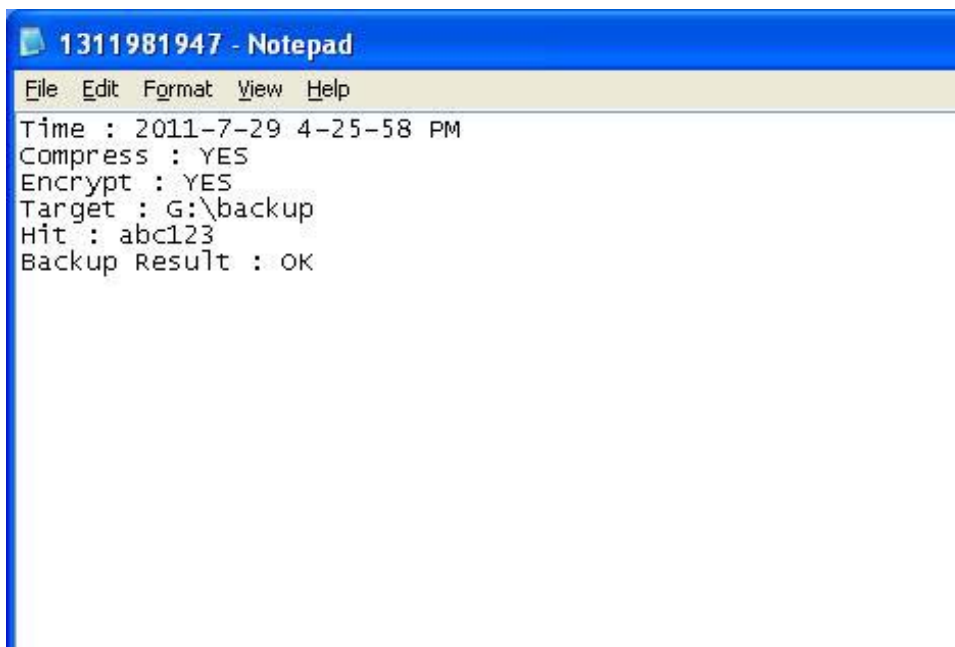


Illustration 10.13

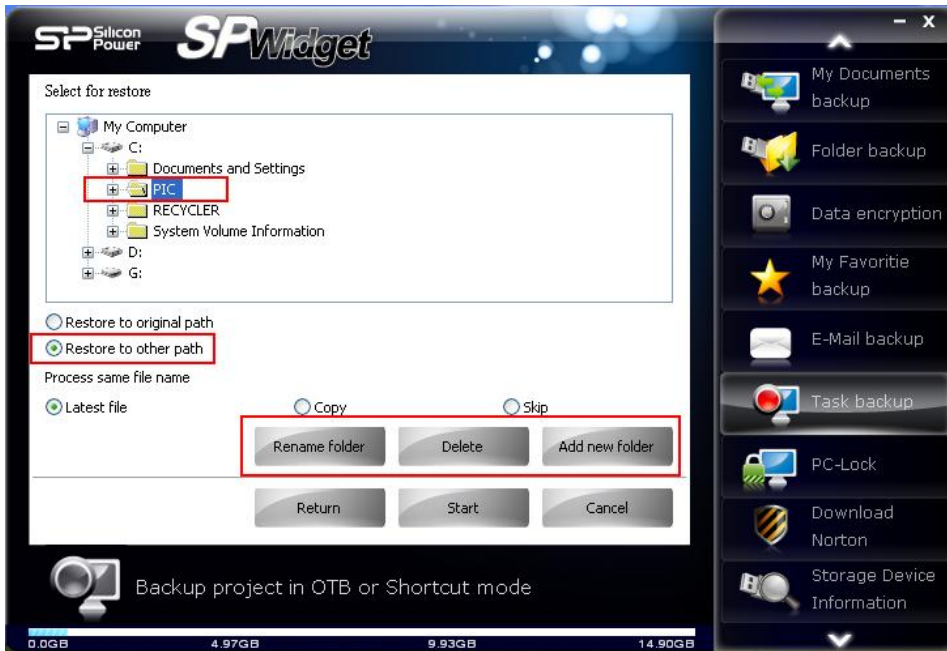


Illustration 10.15

Next is "Start" to restore files (if the restored file is an encrypted file, you should enter a password for confirmation and decompression will start) as shown in Figure 10.16. Completion of the process is as shown in Figure 10.17.

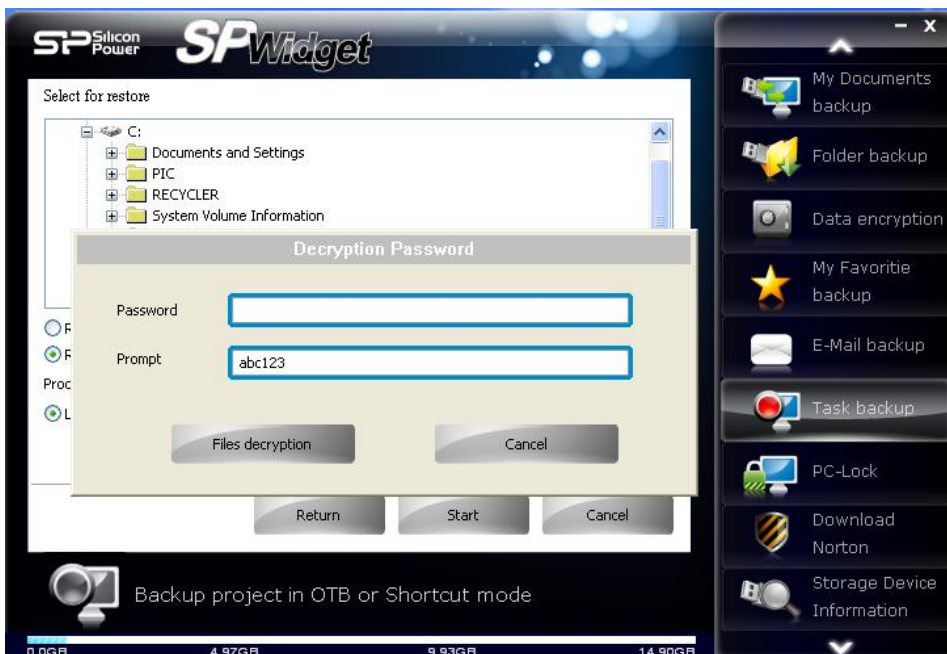


Illustration 10.16



Illustration 10.17

To set up rapid implementation of a task backup (clicking the circles in front of the task name will change the circles to green, indicating that the product will quickly back up when you press the key for implementation of the task) as shown in Figure 10.18.

Note: This feature only supports a quick backup of key products

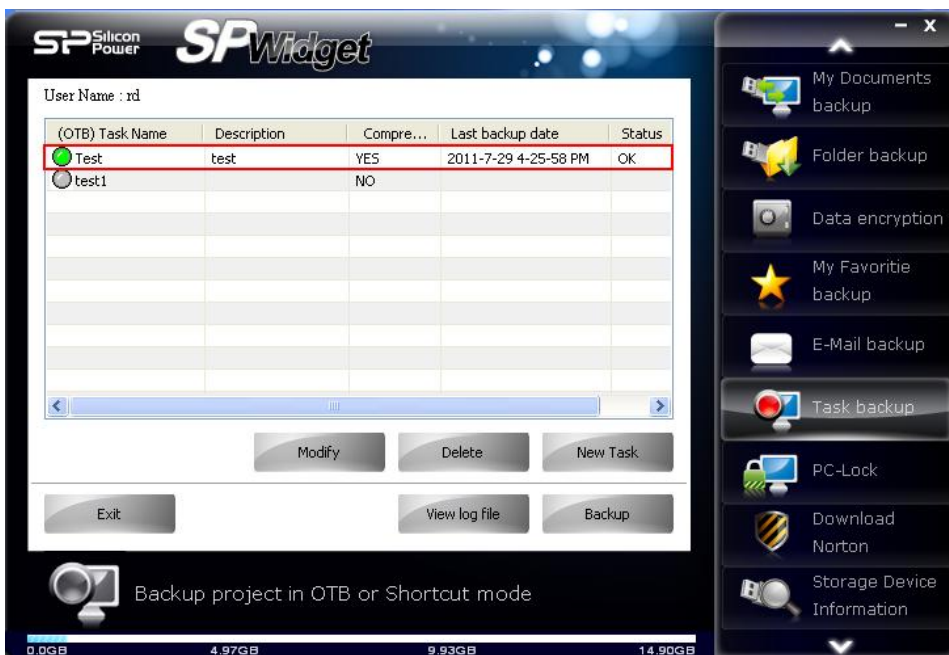


Illustration 10.18

11. PC-Lock function explained

Click on **"PC-Lock"**, two slide-bars will appear and is adjustable to set PC-lock protection time (when set as 00:00, it will automatically change to 1:00). Click on "Show reminder notice" and it will display protection messages (default message is PC-Lock Running).

"Password" set will be to disable the PC-Lock. To disable it, you must enter the password twice in the password and confirm password column.

Click on "add new picture" to select the picture you wish to display when the computer (PC) is locked down. Illustration 11.1 shows what the browser looks like.



Illustration 11.1

Please note that PC-Lock offers three disable method types:

1st method: if a disable password has been set, enter the password to disable PC-Lock
2nd method: if the set protection time has been reached, PC-Lock will automatically disable

3rd method (only for pen drive): Plug in the Storage device that was used to put the computer (PC) into the PC-Lock mode to disable the lock down

Users need only satisfy one of the three methods above to disable the PC-Lock function.

To activate the PC-Lock function, you must click on "Start PC-Lock". A warning will follow to ensure no files on the Storage device is currently in use as shown in illustration 11.2.

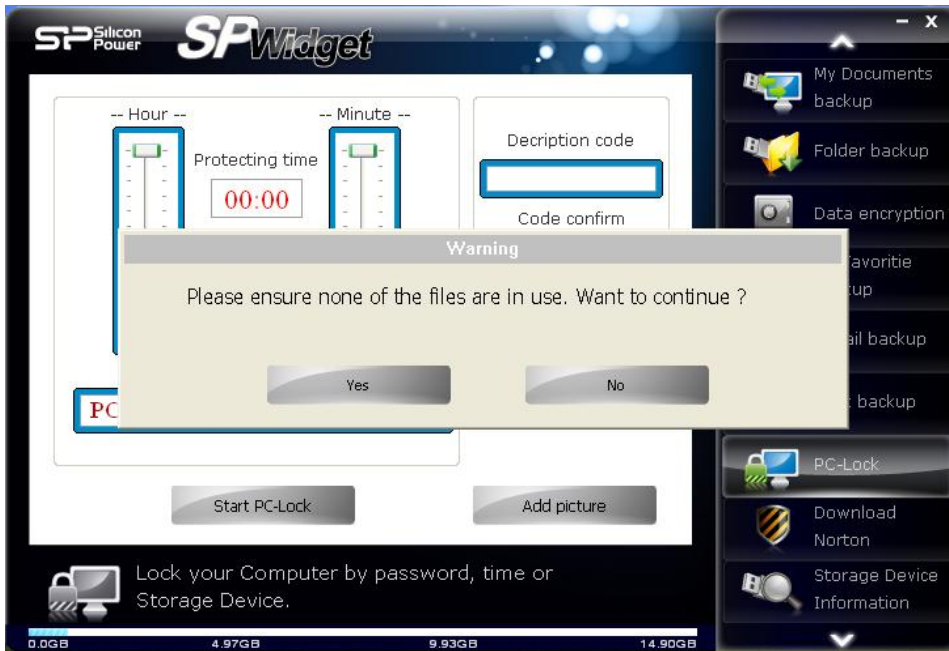


Illustration 11.2

Click on “Yes” and “Terminate PC-Lock” option will appear. Unplug the Storage device from the computer (PC) and PC-Lock will begin its protection mode as shown in illustration 11.3



Illustration 11.3

12. Norton software download

Click on **"Download Norton"**, the following 60-day trial version of Norton Internet Security will appear. Click on "Download Now" to begin download Norton Internet Security 2011 as shown in illustration 12.1



Illustration 12.1

13.Storage device info

Click on **"Storage device info"** to show detail info on the Storage device including synchronization settings as shown in illustration 13.1.

The screenshot displays the SP Widget interface. The main window is titled "SP Silicon Power SPWidget". It features two primary information panels:

- Storage Device information:**

| | |
|-------------------|---------------|
| Device name | SILICON-POWER |
| Device Size | 14.90GB |
| Device Serial No. | 19B59AADF6E2 |
| Volume name | |
- SP Widget Information:**

| | |
|---------------------------|----------|
| Total space | 14.90GB |
| Space available | 13.99GB |
| Total space used | 924.63MB |
| My Documents size | 0.00MB |
| Last synchronization date | |
| My folder Size | 0.00MB |
| Last synchronization date | |
| My favorite size | 0.00MB |
| Last synchronization date | |
| Outlook express Size | 0.00MB |
| Last synchronization date | |
| Outlook size | 0.00MB |
| Last synchronization date | |

At the bottom of the main window, a progress bar shows storage usage from 0.0GB to 14.90GB, with a current usage of 4.97GB. A magnifying glass icon is positioned over the bar with the text "Providing information of your Storage Device." Below the progress bar, a vertical sidebar on the right contains several menu items: "My Documents backup", "Folder backup", "Data encryption", "My Favorite backup", "E-Mail backup", "Task backup", "PC-Lock", "Download Norton", and "Storage Device Information". The "Storage Device Information" item is highlighted with a magnifying glass icon.

Illustration 13.1

14. About Silicon Power

Click on **"News"** and it will be directed towards Silicon Power's official website. Users can click on all available products shown on the browser and acquire the latest Silicon Power news. Shown in illustration 14.1.



Illustration 14.1

15. Software update

Click on **"Download"** and click on "download the latest software", if there is a new SP Widget version, an update selection will appear. Click on the red box on the right to select your download. Shown in illustration 15.1.



Illustration 15.1

16. Language selection

In the “**Language selection**” menu, there are three languages to choose from including English, Traditional Chinese and Simplified Chinese. Selecting “Auto” allows for your operating system to decide the language used as shown in illustration 16.1.



Illustration 16.1

17. Scan Storage Media

A scan of a specified path shows damaged files that cannot be opened, providing scan results and the path to the defective files. See Figure 17.1.

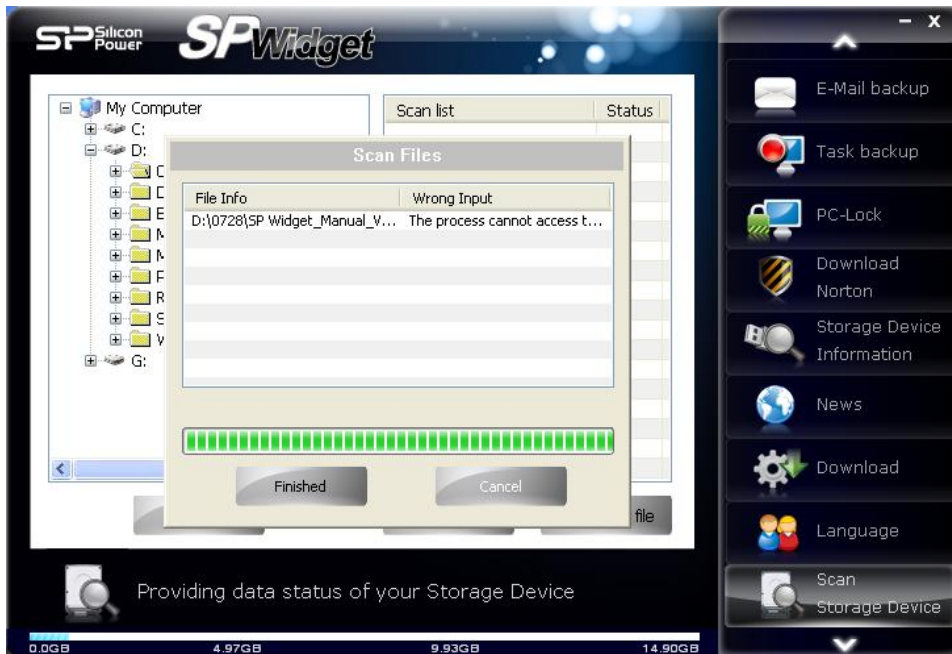


Illustration 17.1

18. Right-Click Data Encryption

Right click to encrypt a single file.

To use this function the system must first execute "Widget_VC"
(After SP Widget software implementation is successful, the user's desktop will be automatically added Widget_VC shortcut) as shown in Figure 18.1.



Illustration 18.1

Follow the screen instructions for installation as shown in Figures 18.2,18.3,18.4.

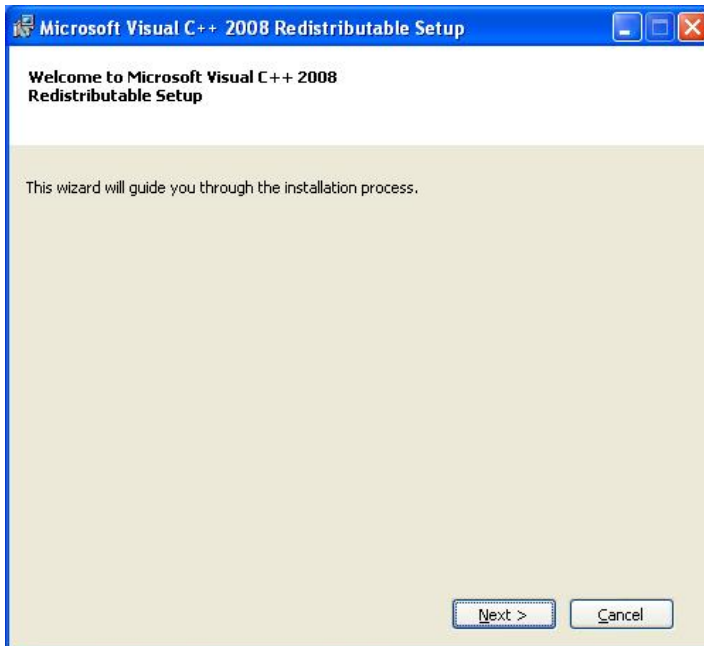


Illustration 18.2

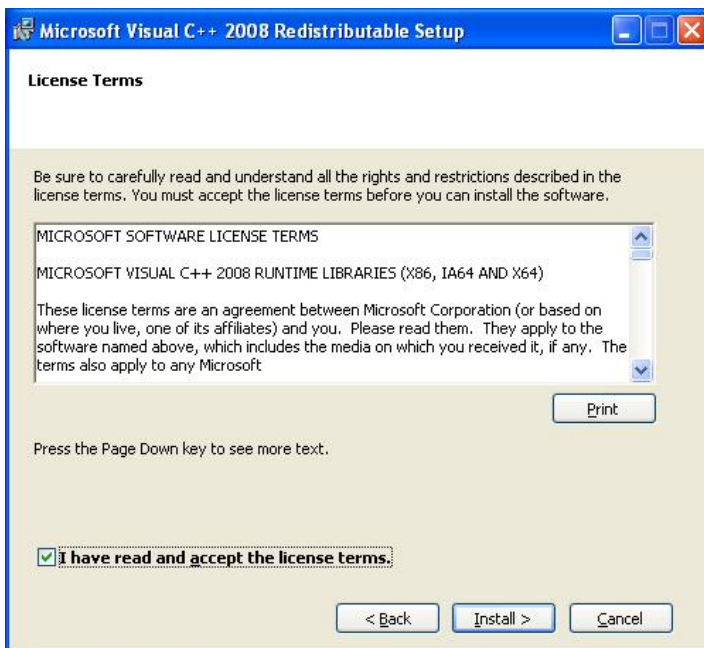


Illustration 18.3

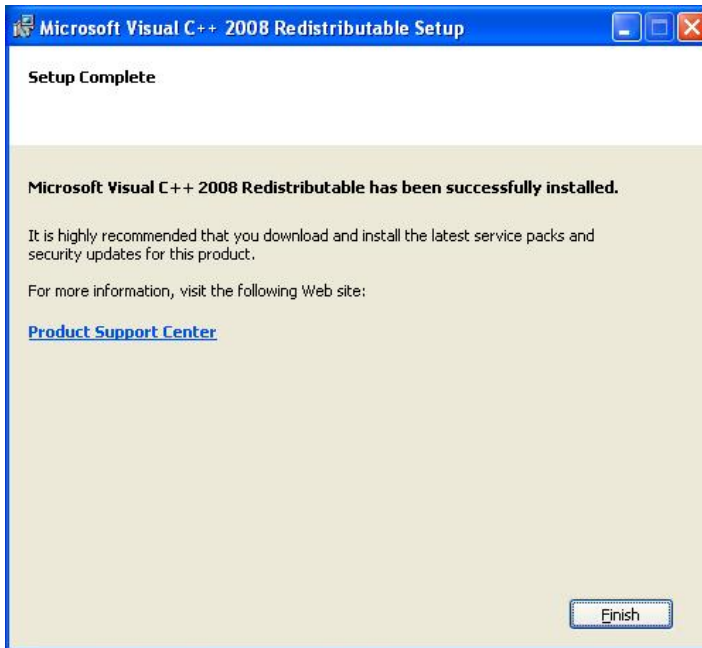


Illustration 18.4

Restart SP Widget software after activating the Widget_VC.

Note: If your system uses later than Windows Vista or Windows 7, when installing SP Widget software you must use administrator level authorization to activate the software. See Figure 18.5.

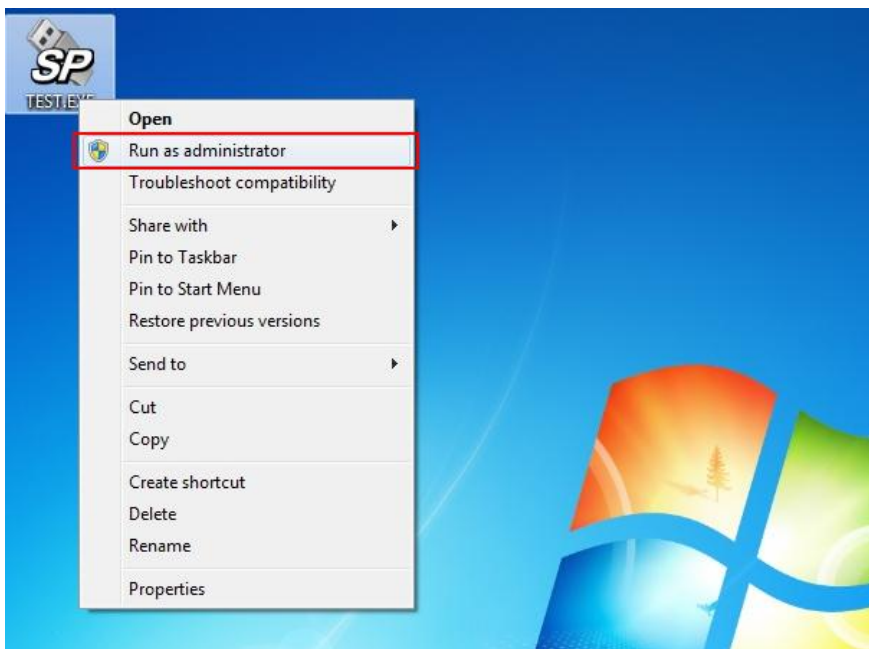


Illustration 18.5

After the SP Widget software has been activated, select the files to be encrypted, and right-click on the menu bar in "SP Widget encryption" as shown in Figure 18.6.

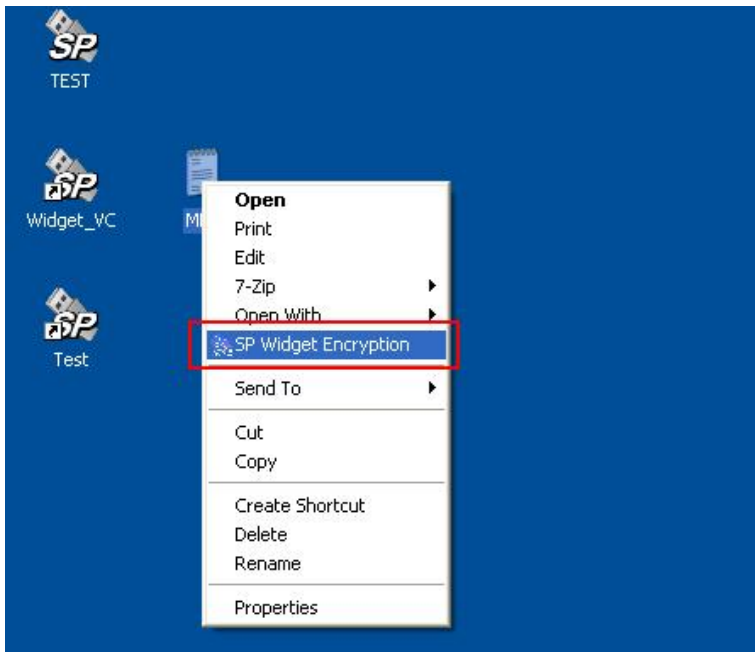


Illustration 18.6

After successful implementation of SP Widget the encryption screen will appear, and the default password will be the specified SP Widget portable device serial number (Note: If the device serial number is used as the password, make sure that when you encrypt and decrypt, the serial number designated for SP Widget and the portable device must be the same), and cancel the tick for any user selected password. See Figure 18.7.

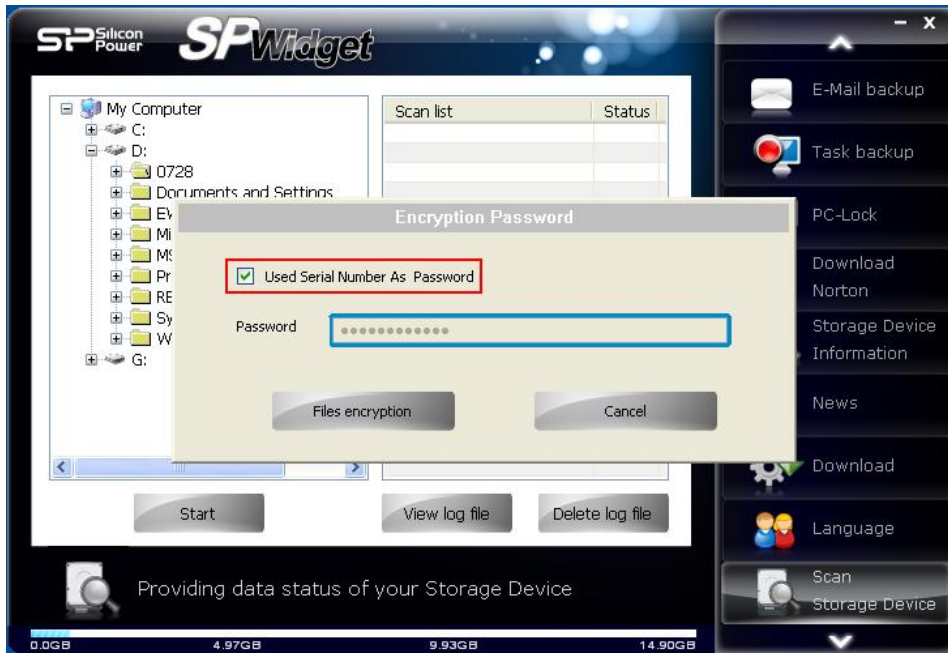


Illustration 18.7

After encryption, the original encrypted file is as shown in Figures 18.8,18.9.



Illustration 18.8

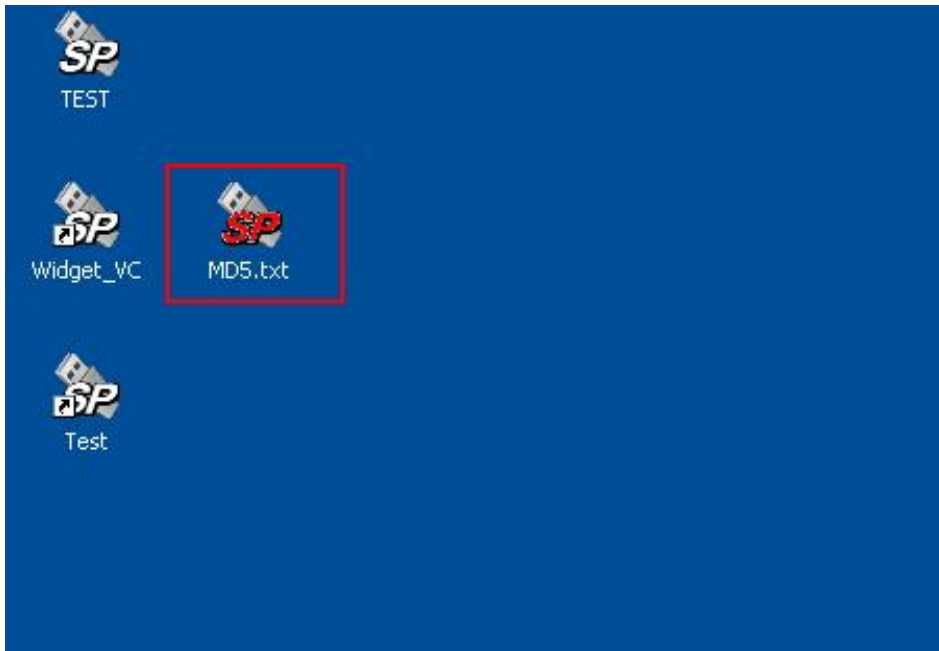


Illustration 18.9

For decryption of the same file, click the encrypted file, and right-click on the menu bar in "SP Widget decrypt" as shown in Figure 18.10

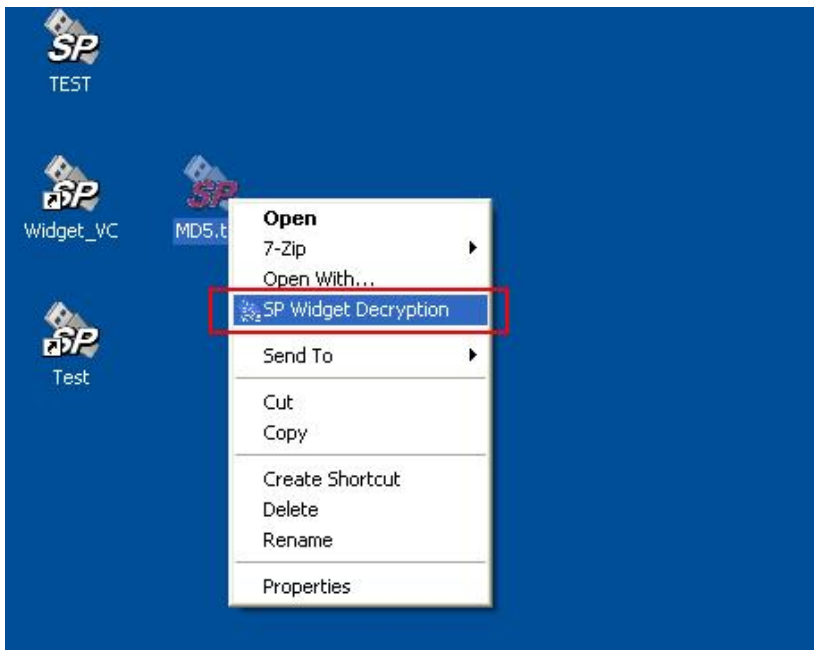


Illustration 18.10

After successful implementation the SP Widget decryption will appear, based on the file encryption password or you may enter a default password to use the software as shown in Figure 18.11.

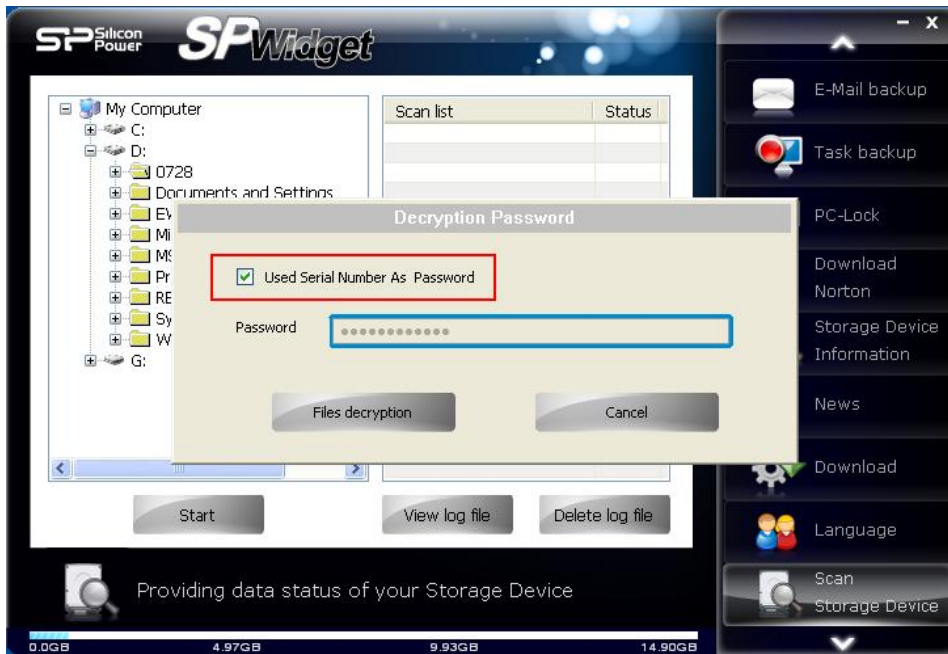


Illustration 18.11

Decryption is complete as shown in Figure 18.12

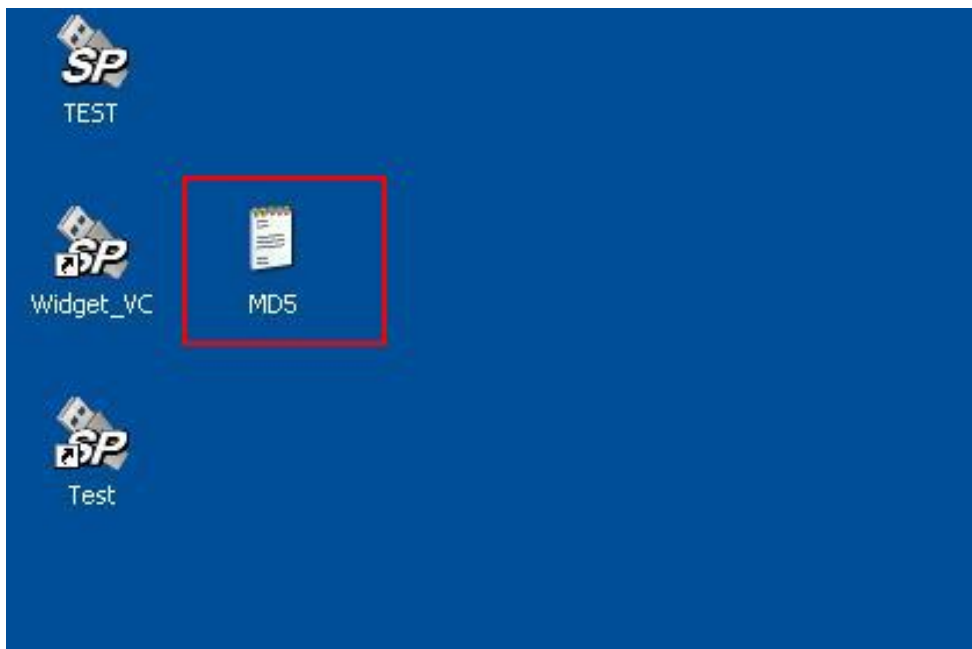


Illustration 18.12